

AVENTINE

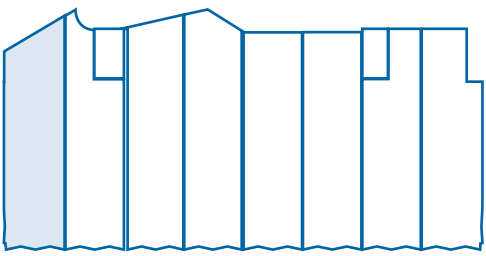
UNIT 2A
2,111 S.F.
roof terrace 227 s.f.
garden terrace 291 s.f.

Residence Features

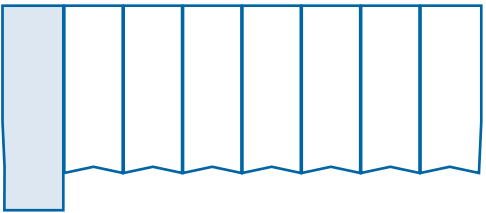
- Foyer entrance
- Master bedroom
- Master bathroom
- Powder room
- Living / Dining room
- Cable, phone, internet, & surround sound ready
- LG Energy Star kitchen appliances
- Caesar Stone kitchen counter tops
- Pantry
- Moen plumbing fixtures
- Dual vanity sinks
- Study / Office area
- Washer / Dryer
- Oversized tub with hand-washer
- Expansive windows
- Spacious closets & storage

Building Amenities

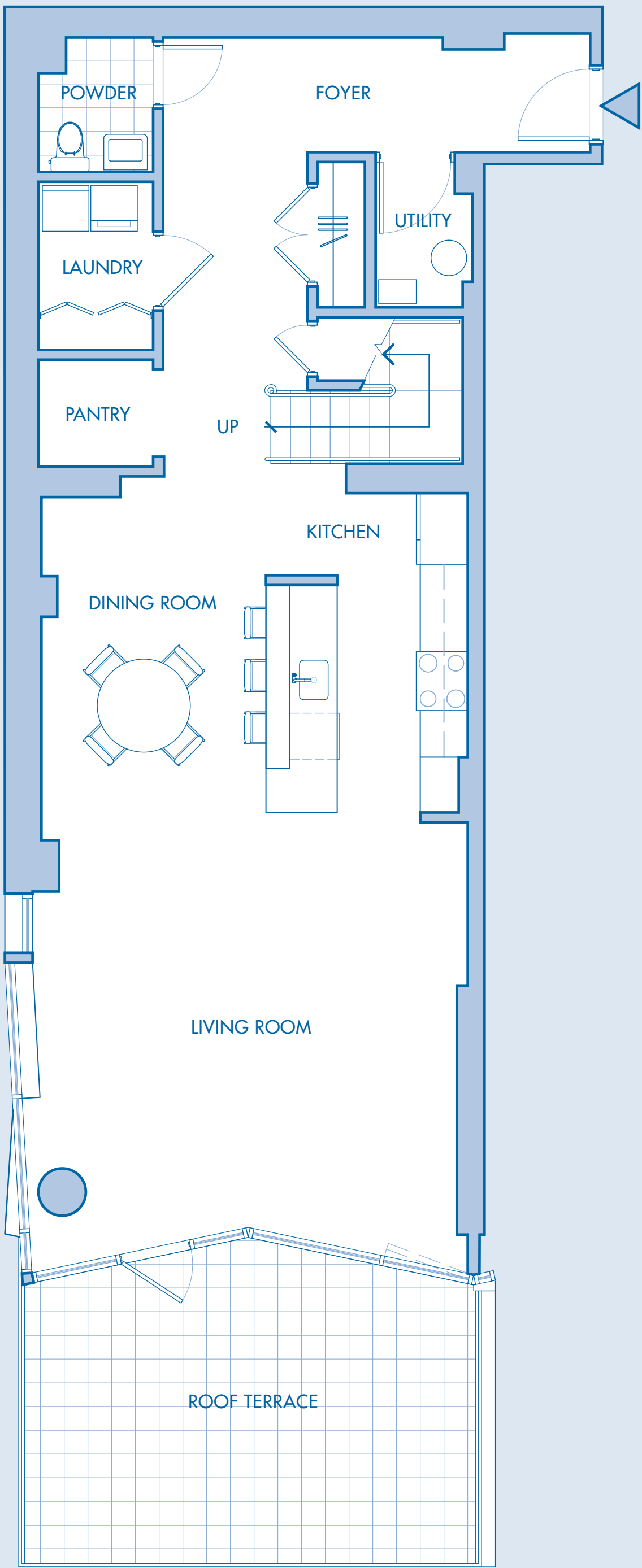
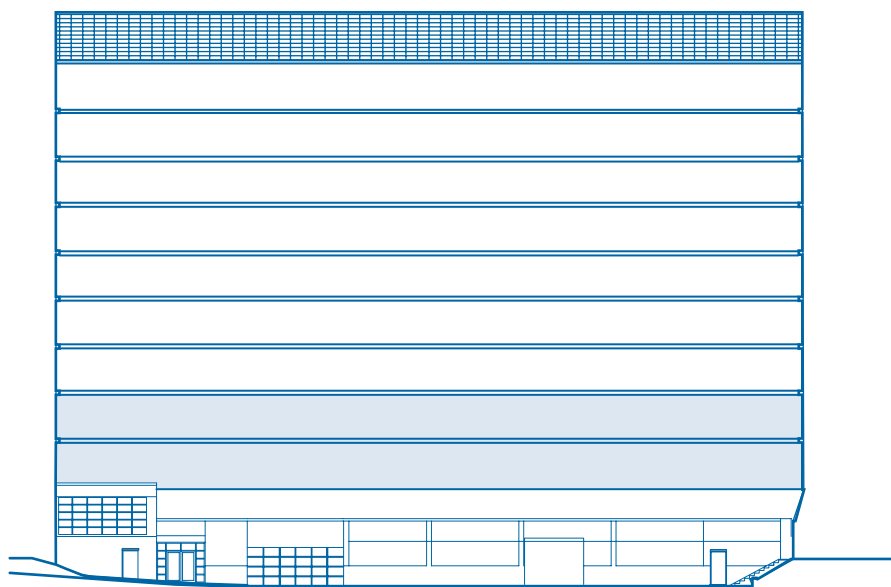
- Full virtual concierge / security system
- Fitness room
- Music studio
- Secure mailroom
- Indoor bicycle rack
- Full lobby with lounge area
- Deeded parking
- Manhattan Views



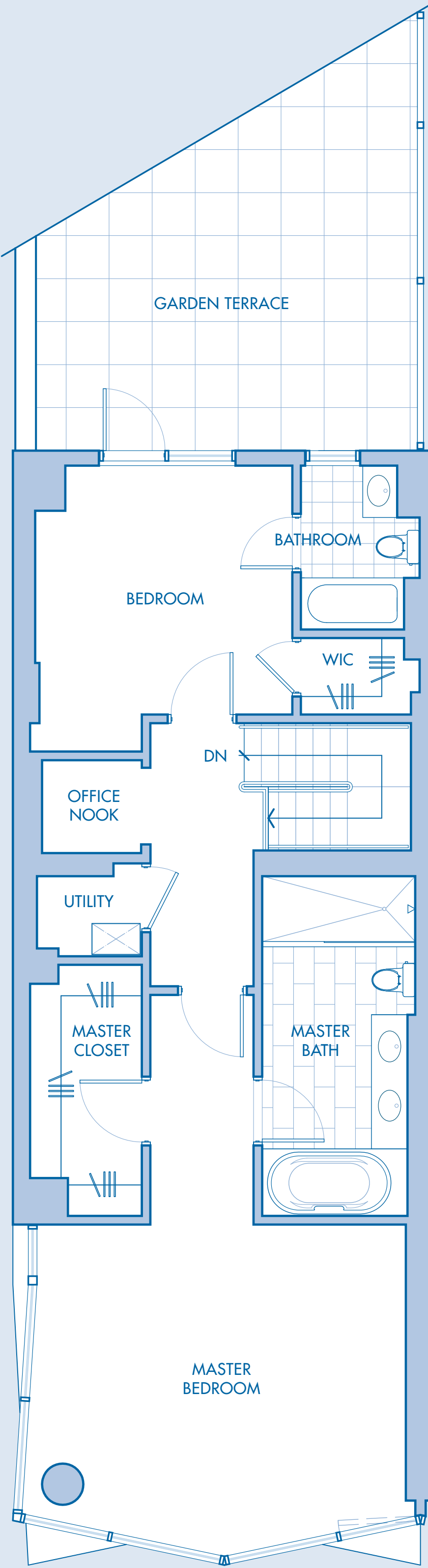
Upper level



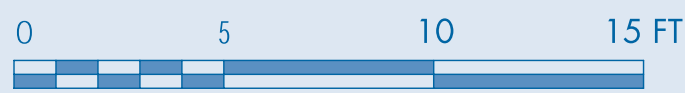
Lower level



LOWER LEVEL



UPPER LEVEL



This floor plan is an artist rendering and reflects approximate layout and measurements which are subject to normal construction variances and tolerances and may be subject to further change by the Sponsor, Aventine Edgewater, LLC. All Units offered in Aventine Above the Hudson, a Condominium (the "Condominium"), will, however, substantially conform to the sales models, descriptions or floor plans relied upon by a prospective purchase when entering into a purchase agreement with the Sponsor. The Condominium is an equal housing opportunity in which there are no barriers to obtaining housing because of race, creed, color, national origin, ancestry, age, sex, gender identity or expression, affectional or sexual orientation, marital status, familial status, liability for service in the Armed Forces of the United States, disability, or nationality. These photographs depict geographic locations, shopping and facilities which are not located within the Condominium and are approximately 5 miles from the Condominium. Renderings are artist's conceptions which depict the proposed common elements, units and facilities which are planned for the Condominium.



AVENTINE

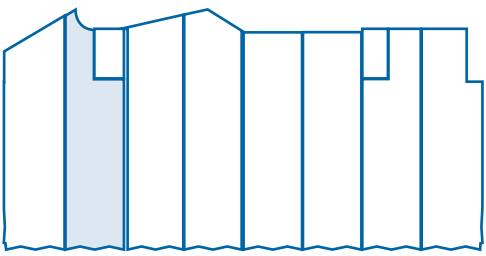
UNIT 2B
1,891 S.F.
garden terrace 200 s.f.

Residence Features

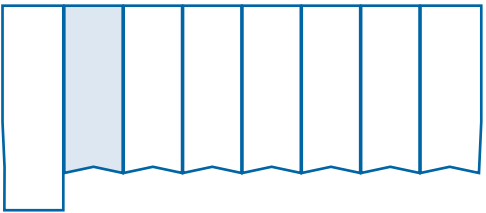
- Foyer entrance
- Master bedroom
- Master bathroom
- Powder room
- Living / Dining room
- Cable, phone, internet, & surround sound ready
- LG Energy Star kitchen appliances
- Caesar Stone kitchen counter tops
- Pantry
- Moen plumbing fixtures
- Dual vanity sinks
- Study / Office area
- Washer / Dryer
- Oversized tub with hand-washer
- Expansive windows
- Spacious closets & storage

Building Amenities

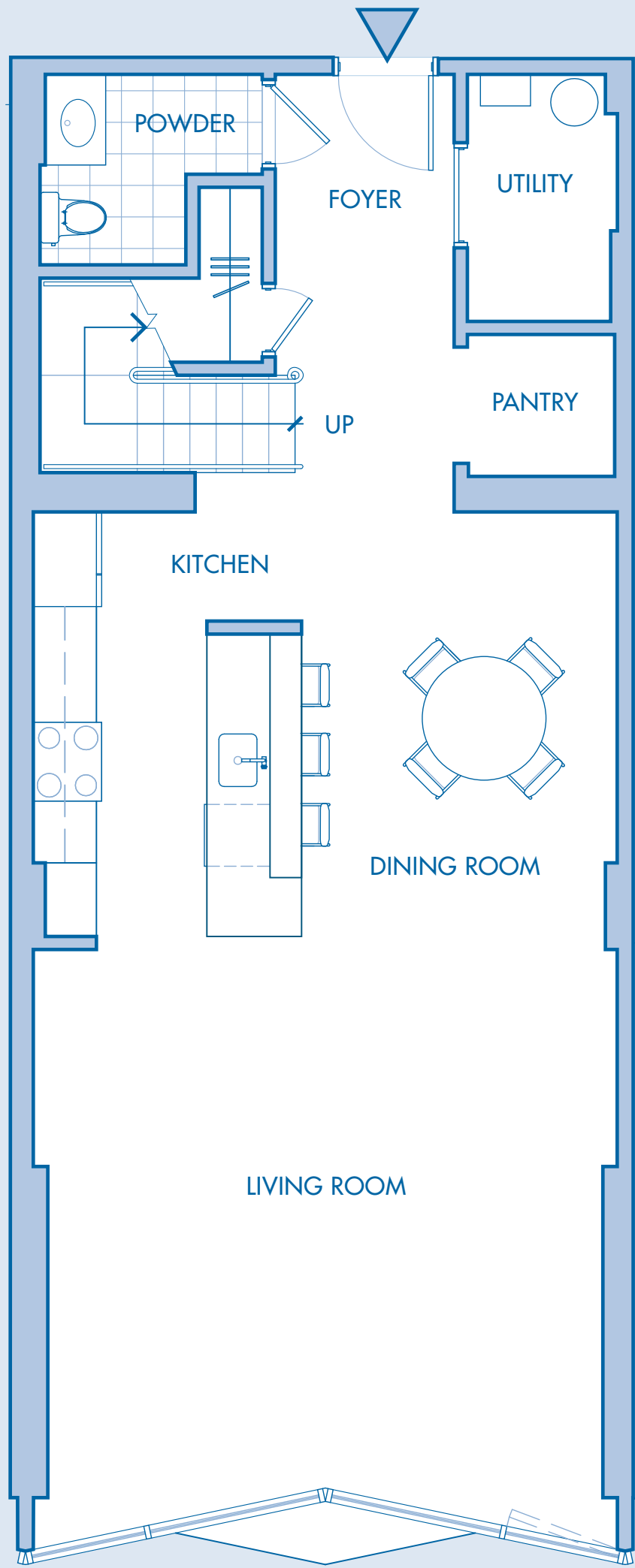
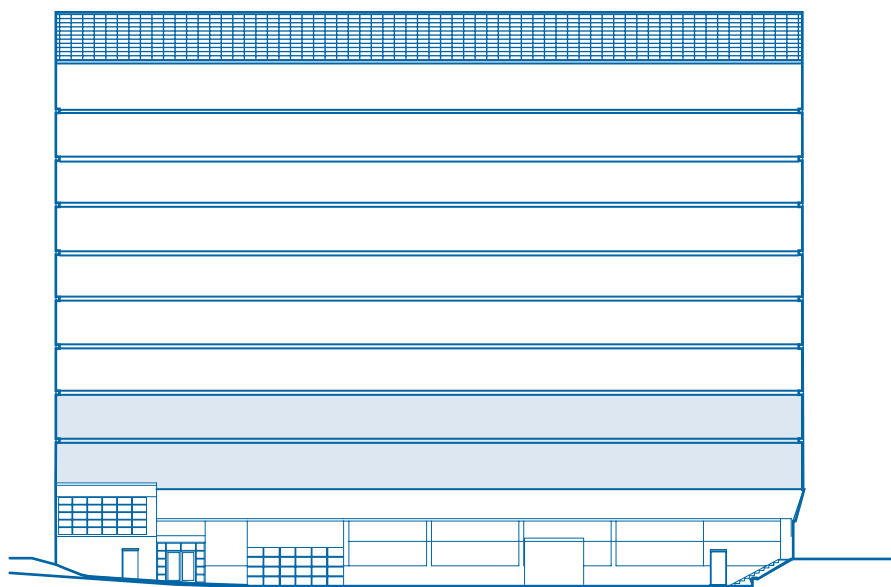
- Full virtual concierge / security system
- Fitness room
- Music studio
- Secure mailroom
- Indoor bicycle rack
- Full lobby with lounge area
- Deeded parking
- Manhattan Views



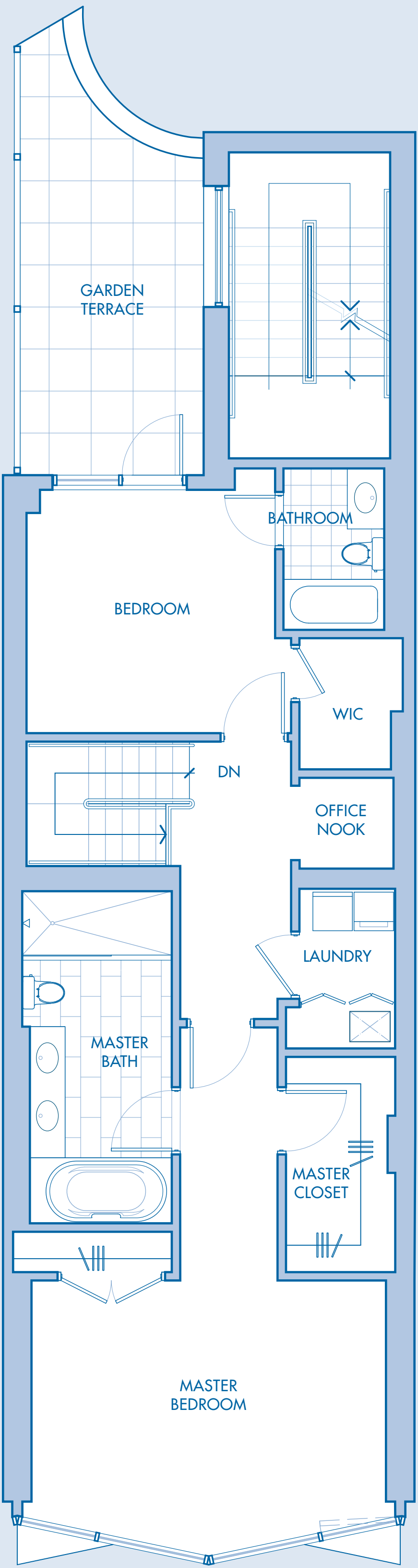
Upper level



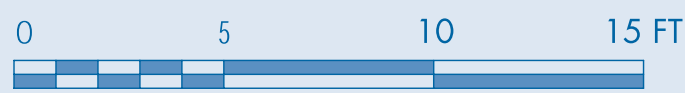
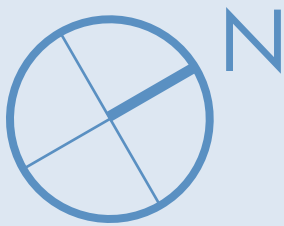
Lower level



LOWER LEVEL



UPPER LEVEL



This floor plan is an artist rendering and reflects approximate layout and measurements which are subject to normal construction variances and tolerances and may be subject to further change by the Sponsor, Aventine Edgewater, LLC. All Units offered in Aventine Above the Hudson, a Condominium (the "Condominium"), will, however, substantially conform to the sales models, descriptions or floor plans relied upon by a prospective purchase when entering into a purchase agreement with the Sponsor. The Condominium is an equal housing opportunity in which there are no barriers to obtaining housing because of race, creed, color, national origin, ancestry, age, sex, gender identity or expression, affectional or sexual orientation, marital status, familial status, liability for service in the Armed Forces of the United States, disability, or nationality. These photographs depict geographic locations, shopping and facilities which are not located within the Condominium and are approximately 5 miles from the Condominium. Renderings are artist's conceptions which depict the proposed common elements, units and facilities which are planned for the Condominium.

AVENTINE

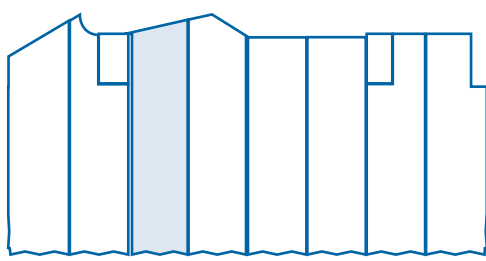
UNIT 2C
1,943 S.F.
garden terrace 281 s.f.

Residence Features

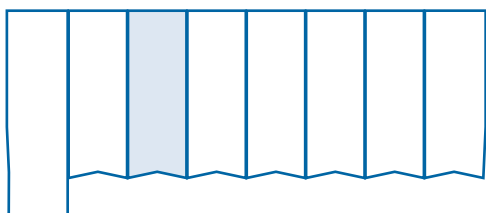
- Foyer entrance
- Master bedroom
- Master bathroom
- Powder room
- Living / Dining room
- Cable, phone, internet, & surround sound ready
- LG Energy Star kitchen appliances
- Caesar Stone kitchen counter tops
- Pantry
- Moen plumbing fixtures
- Dual vanity sinks
- Study / Office area
- Washer / Dryer
- Oversized tub with hand-washer
- Expansive windows
- Spacious closets & storage

Building Amenities

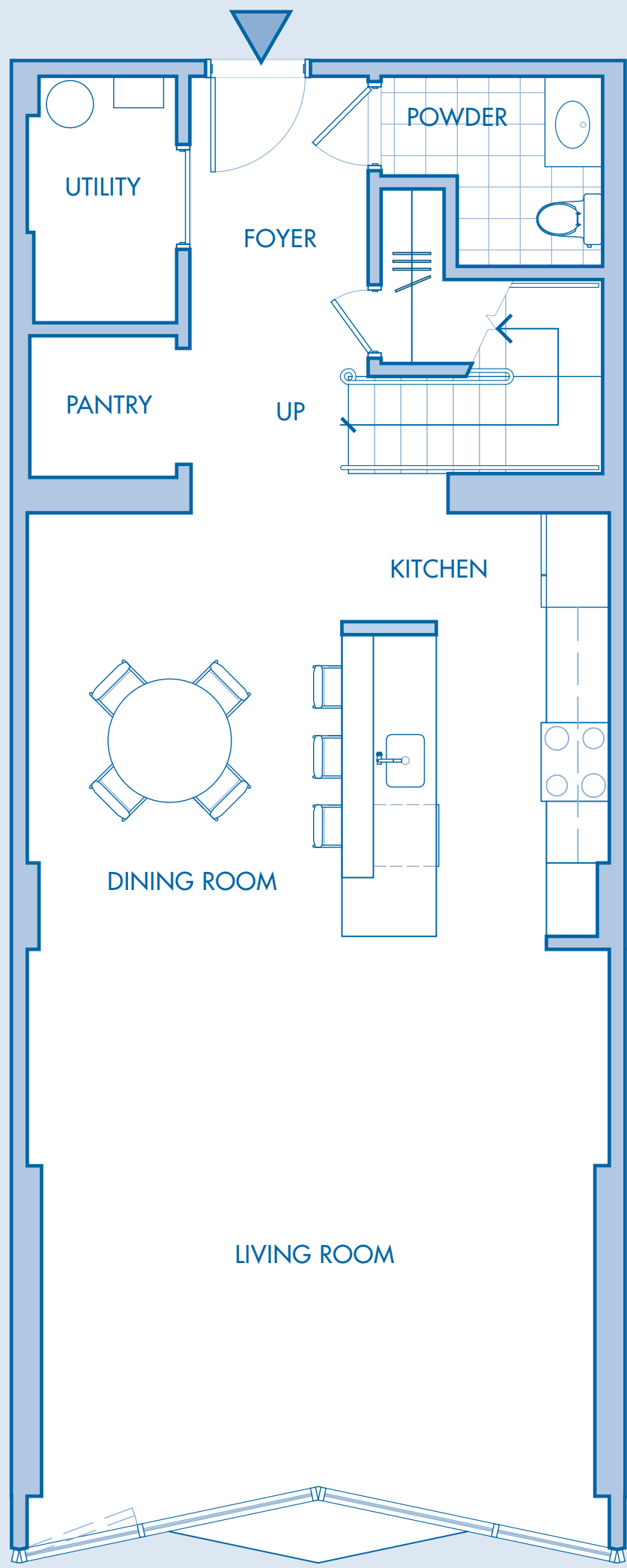
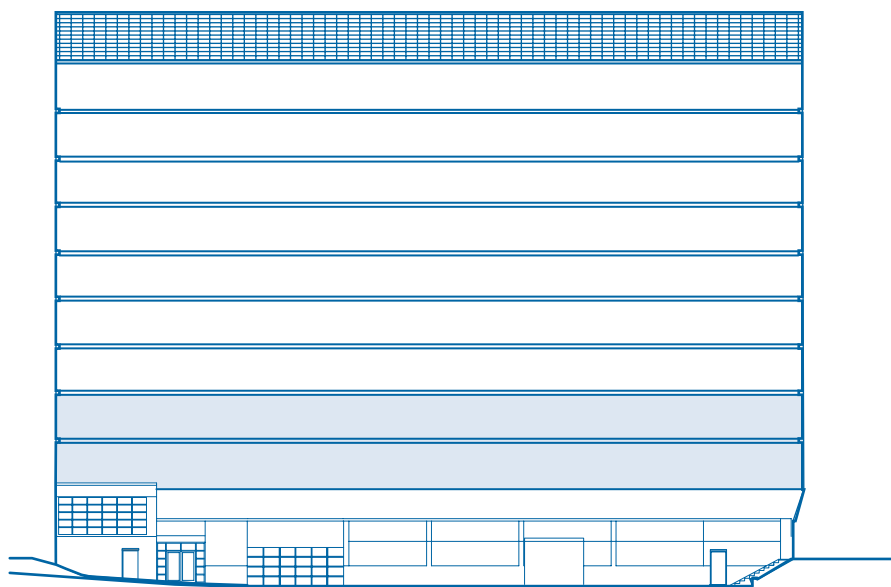
- Full virtual concierge / security system
- Fitness room
- Music studio
- Secure mailroom
- Indoor bicycle rack
- Full lobby with lounge area
- Deeded parking
- Manhattan Views



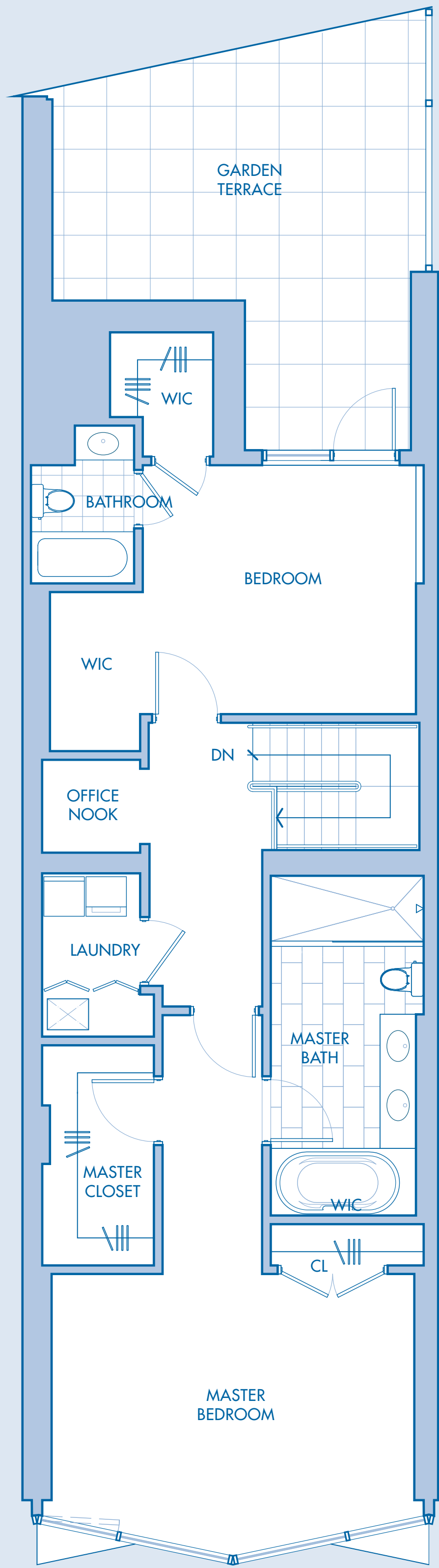
Upper level



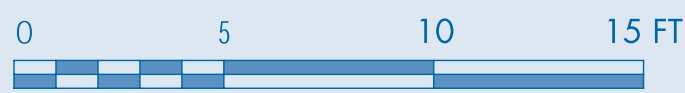
Lower level



LOWER LEVEL



UPPER LEVEL



This floor plan is an artist rendering and reflects approximate layout and measurements which are subject to normal construction variances and tolerances and may be subject to further change by the Sponsor, Aventine Edgewater, LLC. All Units offered in Aventine Above the Hudson, a Condominium (the "Condominium"), will, however, substantially conform to the sales models, descriptions or floor plans relied upon by a prospective purchase when entering into a purchase agreement with the Sponsor. The Condominium is an equal housing opportunity in which there are no barriers to obtaining housing because of race, creed, color, national origin, ancestry, age, sex, gender identity or expression, affectional or sexual orientation, marital status, familial status, liability for service in the Armed Forces of the United States, disability, or nationality. These photographs depict geographic locations, shopping and facilities which are not located within the Condominium and are approximately 5 miles from the Condominium. Renderings are artist's conceptions which depict the proposed common elements, units and facilities which are planned for the Condominium.

AVENTINE

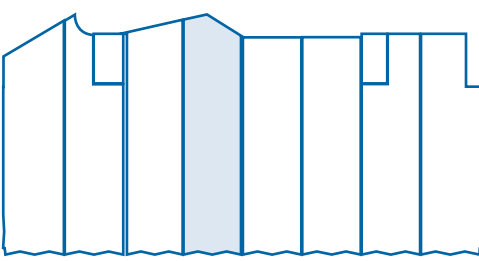
UNIT 2D
1,890 S.F.
garden terrace 303 s.f.

Residence Features

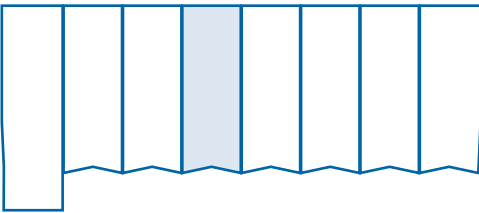
- Foyer entrance
- Master bedroom
- Master bathroom
- Powder room
- Living / Dining room
- Cable, phone, internet, & surround sound ready
- LG Energy Star kitchen appliances
- Caesar Stone kitchen counter tops
- Pantry
- Moen plumbing fixtures
- Dual vanity sinks
- Study / Office area
- Washer / Dryer
- Oversized tub with hand-washer
- Expansive windows
- Spacious closets & storage

Building Amenities

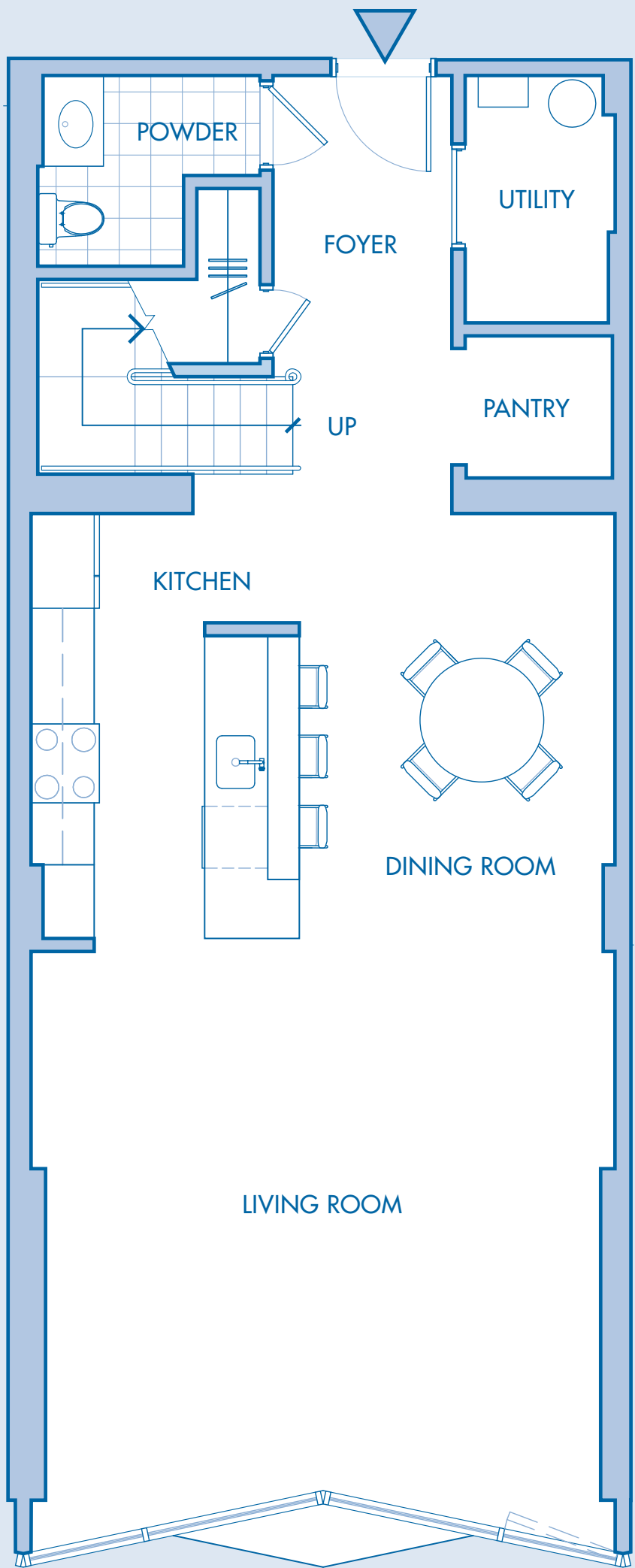
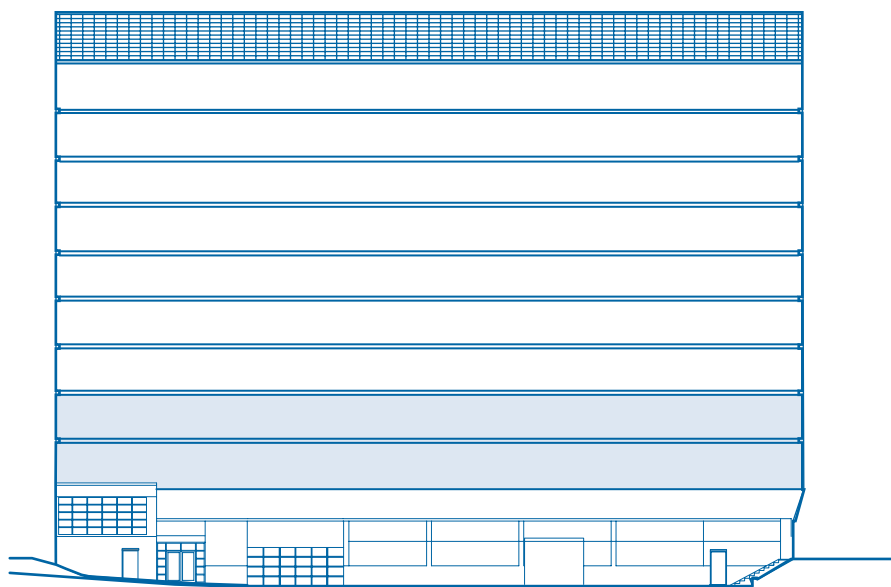
- Full virtual concierge / security system
- Fitness room
- Music studio
- Secure mailroom
- Indoor bicycle rack
- Full lobby with lounge area
- Deeded parking
- Manhattan Views



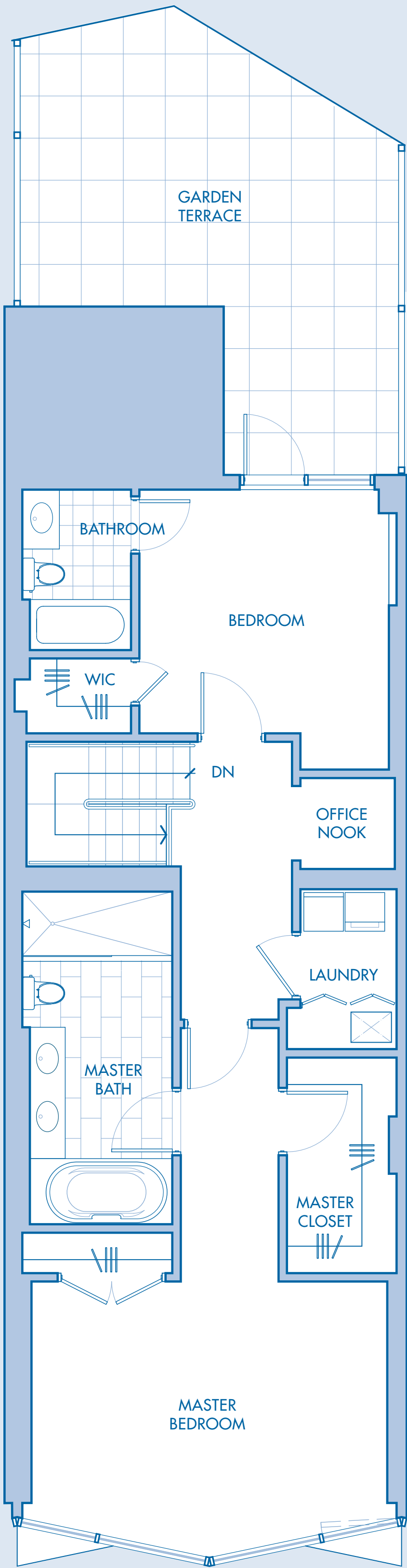
Upper level



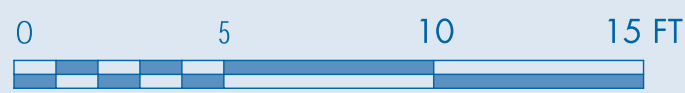
Lower level



LOWER LEVEL



UPPER LEVEL



This floor plan is an artist rendering and reflects approximate layout and measurements which are subject to normal construction variances and tolerances and may be subject to further change by the Sponsor, Aventine Edgewater, LLC. All Units offered in Aventine Above the Hudson, a Condominium (the "Condominium"), will, however, substantially conform to the sales models, descriptions or floor plans relied upon by a prospective purchase when entering into a purchase agreement with the Sponsor. The Condominium is an equal housing opportunity in which there are no barriers to obtaining housing because of race, creed, color, national origin, ancestry, age, sex, gender identity or expression, affectional or sexual orientation, marital status, familial status, liability for service in the Armed Forces of the United States, disability, or nationality. These photographs depict geographic locations, shopping and facilities which are not located within the Condominium and are approximately 5 miles from the Condominium. Renderings are artist's conceptions which depict the proposed common elements, units and facilities which are planned for the Condominium.

AVENTINE

UNIT 2E

1,890 S.F.

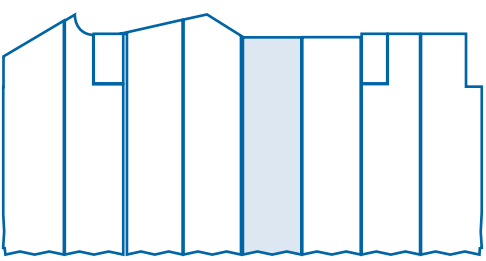
garden terrace 302 s.f.

Residence Features

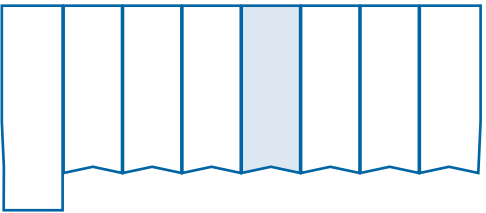
- Foyer entrance
- Master bedroom
- Master bathroom
- Powder room
- Living / Dining room
- Cable, phone, internet, & surround sound ready
- LG Energy Star kitchen appliances
- Caesar Stone kitchen counter tops
- Pantry
- Moen plumbing fixtures
- Dual vanity sinks
- Study / Office area
- Washer / Dryer
- Oversized tub with hand-washer
- Expansive windows
- Spacious closets & storage

Building Amenities

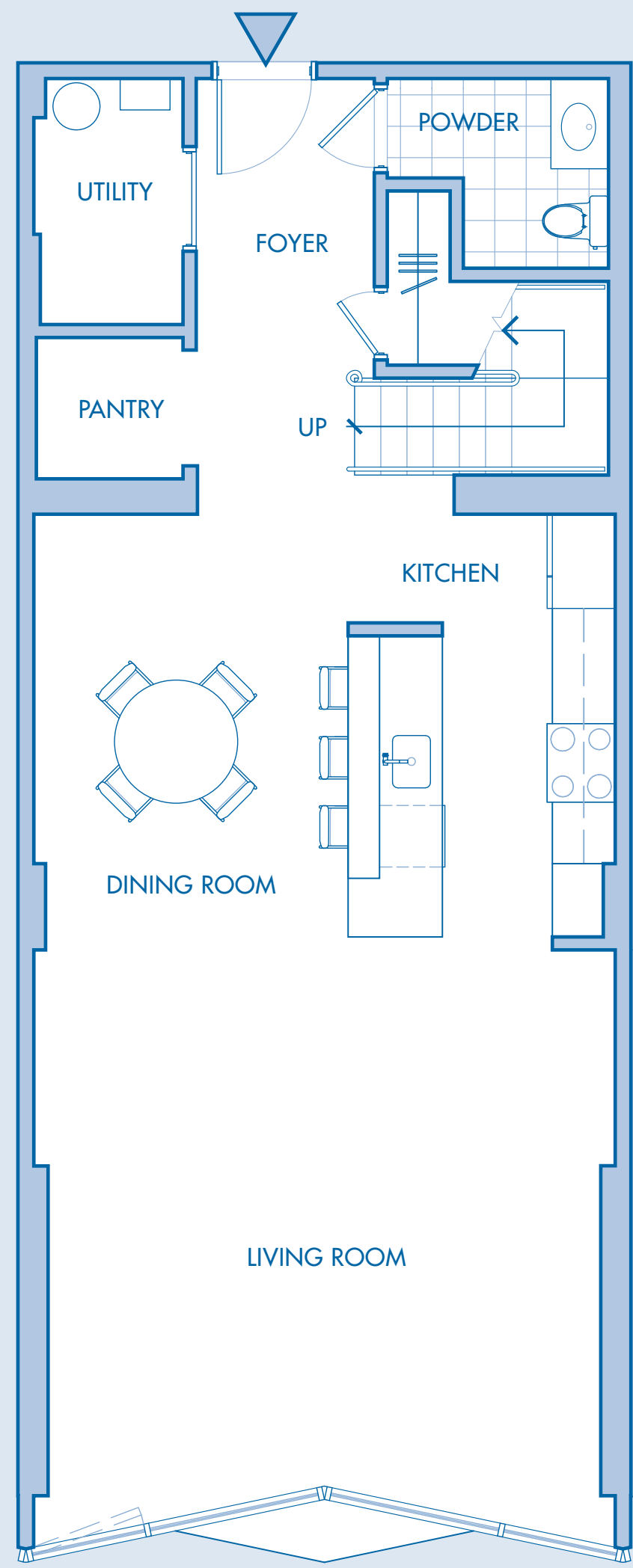
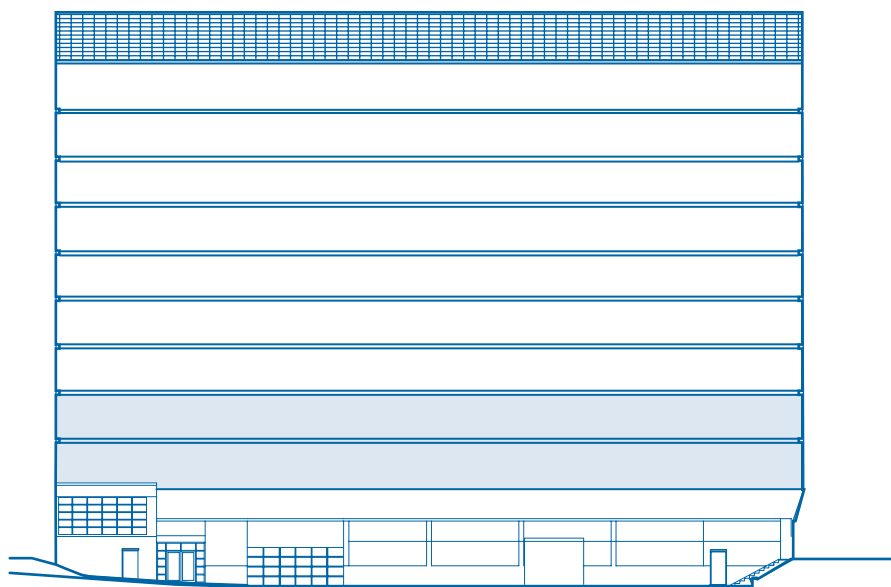
- Full virtual concierge / security system
- Fitness room
- Music studio
- Secure mailroom
- Indoor bicycle rack
- Full lobby with lounge area
- Deeded parking
- Manhattan Views



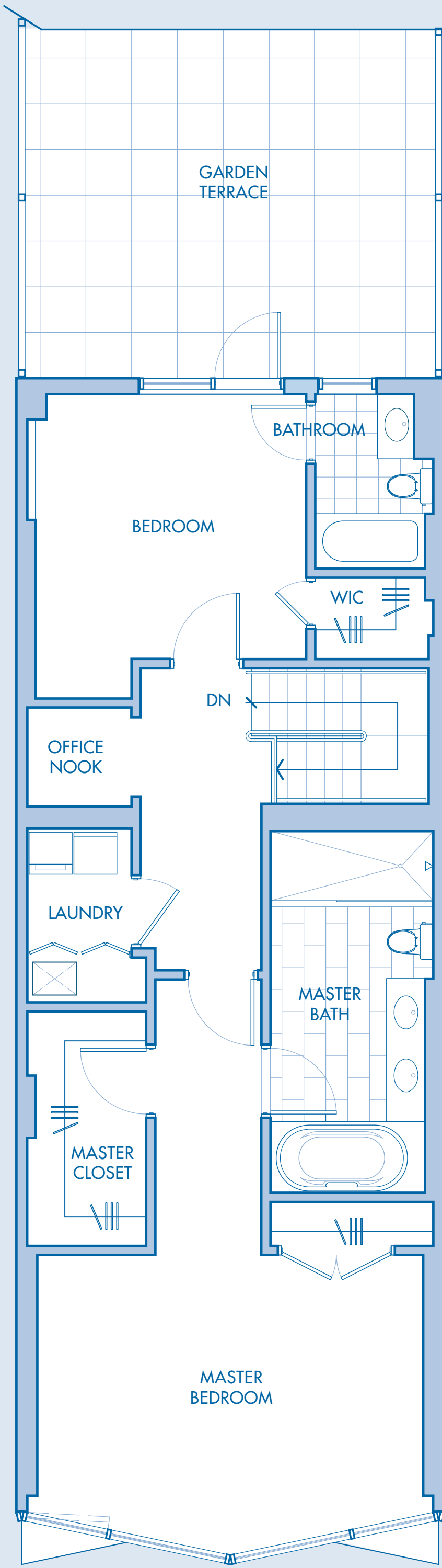
Upper level



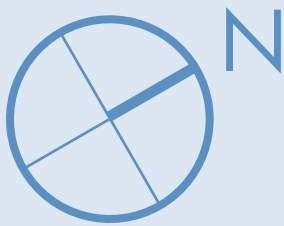
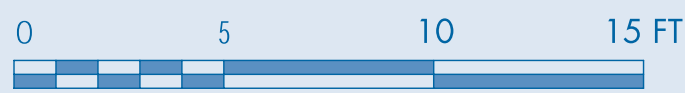
Lower level



LOWER LEVEL



UPPER LEVEL



This floor plan is an artist rendering and reflects approximate layout and measurements which are subject to normal construction variances and tolerances and may be subject to further change by the Sponsor, Aventine Edgewater, LLC. All Units offered in Aventine Above the Hudson, a Condominium (the "Condominium"), will, however, substantially conform to the sales models, descriptions or floor plans relied upon by a prospective purchase when entering into a purchase agreement with the Sponsor. The Condominium is an equal housing opportunity in which there are no barriers to obtaining housing because of race, creed, color, national origin, ancestry, age, sex, gender identity or expression, affectional or sexual orientation, marital status, familial status, liability for service in the Armed Forces of the United States, disability, or nationality. These photographs depict geographic locations, shopping and facilities which are not located within the Condominium and are approximately 5 miles from the Condominium. Renderings are artist's conceptions which depict the proposed common elements, units and facilities which are planned for the Condominium.

AVENTINE

UNIT 2F

1,894 S.F.

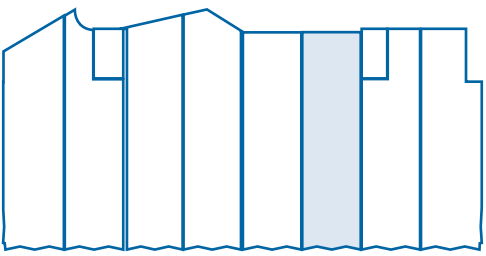
garden terrace 290 s.f.

Residence Features

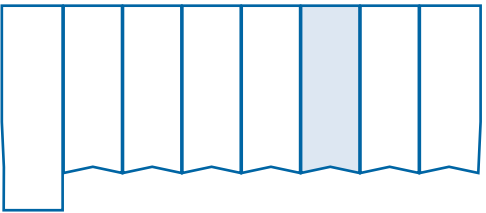
- Foyer entrance
- Master bedroom
- Master bathroom
- Powder room
- Living / Dining room
- Cable, phone, internet, & surround sound ready
- LG Energy Star kitchen appliances
- Caesar Stone kitchen counter tops
- Pantry
- Moen plumbing fixtures
- Dual vanity sinks
- Study / Office area
- Washer / Dryer
- Oversized tub with hand-washer
- Expansive windows
- Spacious closets & storage

Building Amenities

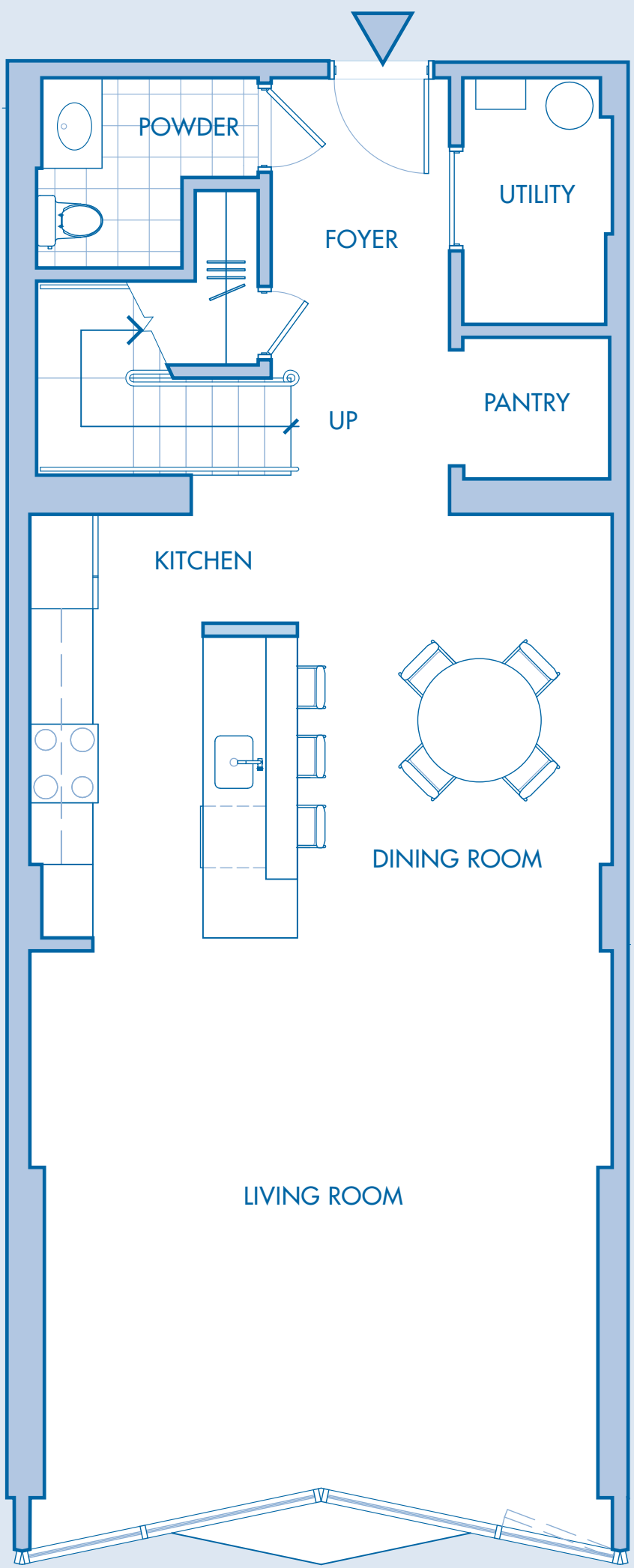
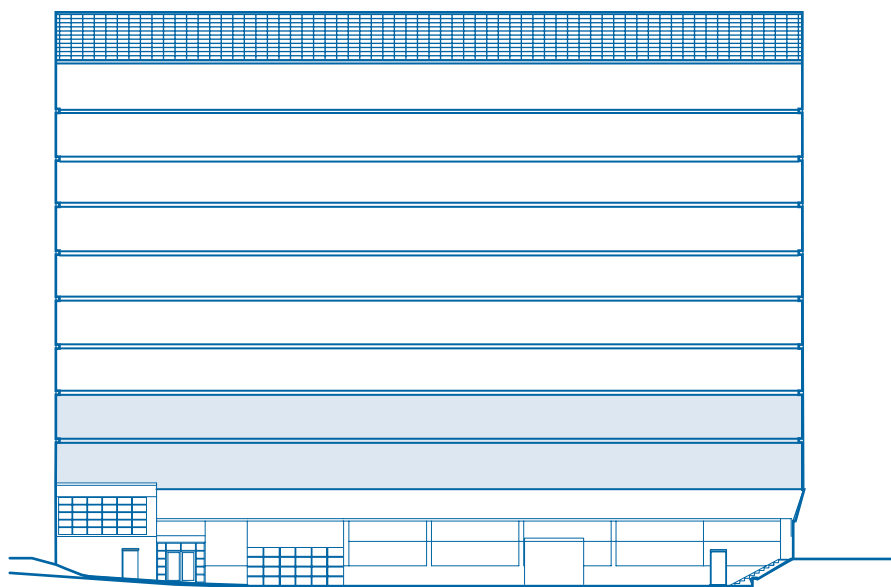
- Full virtual concierge / security system
- Fitness room
- Music studio
- Secure mailroom
- Indoor bicycle rack
- Full lobby with lounge area
- Deeded parking
- Manhattan Views



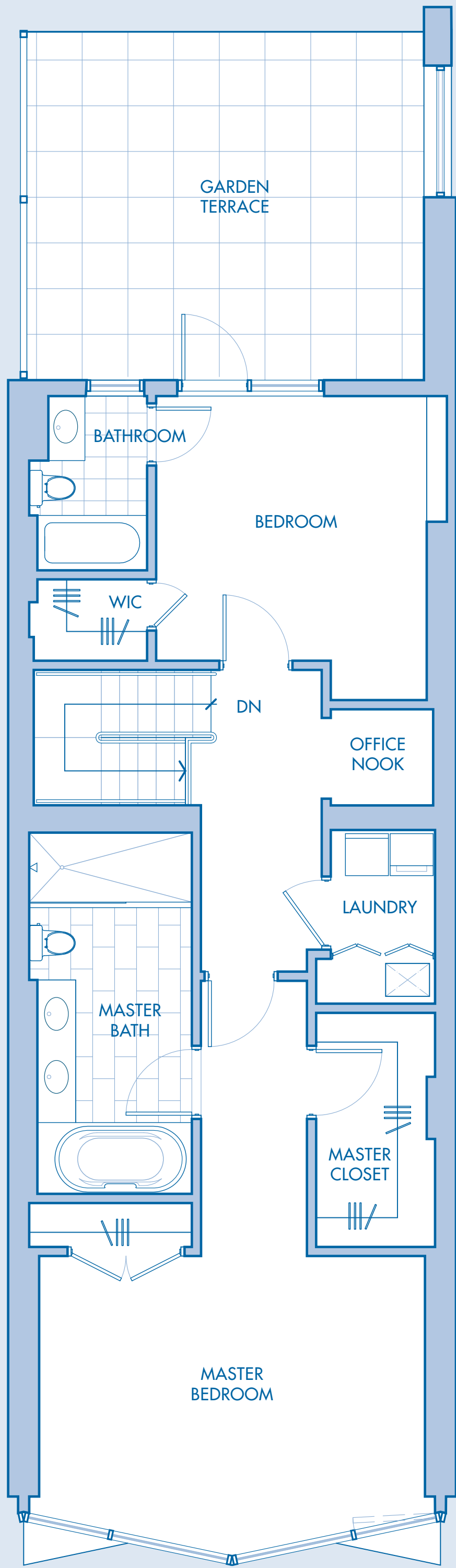
Upper level



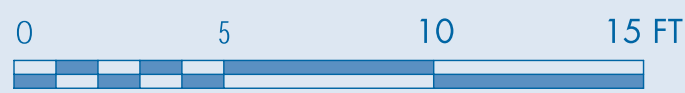
Lower level



LOWER LEVEL



UPPER LEVEL



This floor plan is an artist rendering and reflects approximate layout and measurements which are subject to normal construction variances and tolerances and may be subject to further change by the Sponsor, Aventine Edgewater, LLC. All Units offered in Aventine Above the Hudson, a Condominium (the "Condominium"), will, however, substantially conform to the sales models, descriptions or floor plans relied upon by a prospective purchase when entering into a purchase agreement with the Sponsor. The Condominium is an equal housing opportunity in which there are no barriers to obtaining housing because of race, creed, color, national origin, ancestry, age, sex, gender identity or expression, affectional or sexual orientation, marital status, familial status, liability for service in the Armed Forces of the United States, disability, or nationality. These photographs depict geographic locations, shopping and facilities which are not located within the Condominium and are approximately 5 miles from the Condominium. Renderings are artist's conceptions which depict the proposed common elements, units and facilities which are planned for the Condominium.



AVENTINE

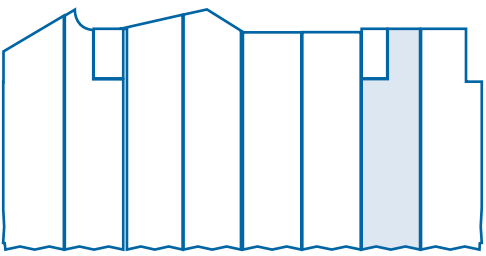
UNIT 2G
1,891 S.F.
garden terrace 148 s.f.

Residence Features

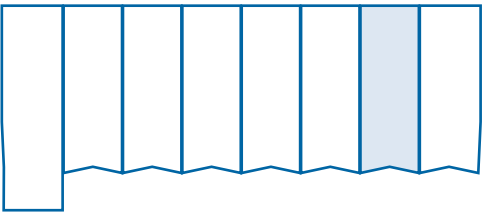
- Foyer entrance
- Master bedroom
- Master bathroom
- Powder room
- Living / Dining room
- Cable, phone, internet, & surround sound ready
- LG Energy Star kitchen appliances
- Caesar Stone kitchen counter tops
- Pantry
- Moen plumbing fixtures
- Dual vanity sinks
- Study / Office area
- Washer / Dryer
- Oversized tub with hand-washer
- Expansive windows
- Spacious closets & storage

Building Amenities

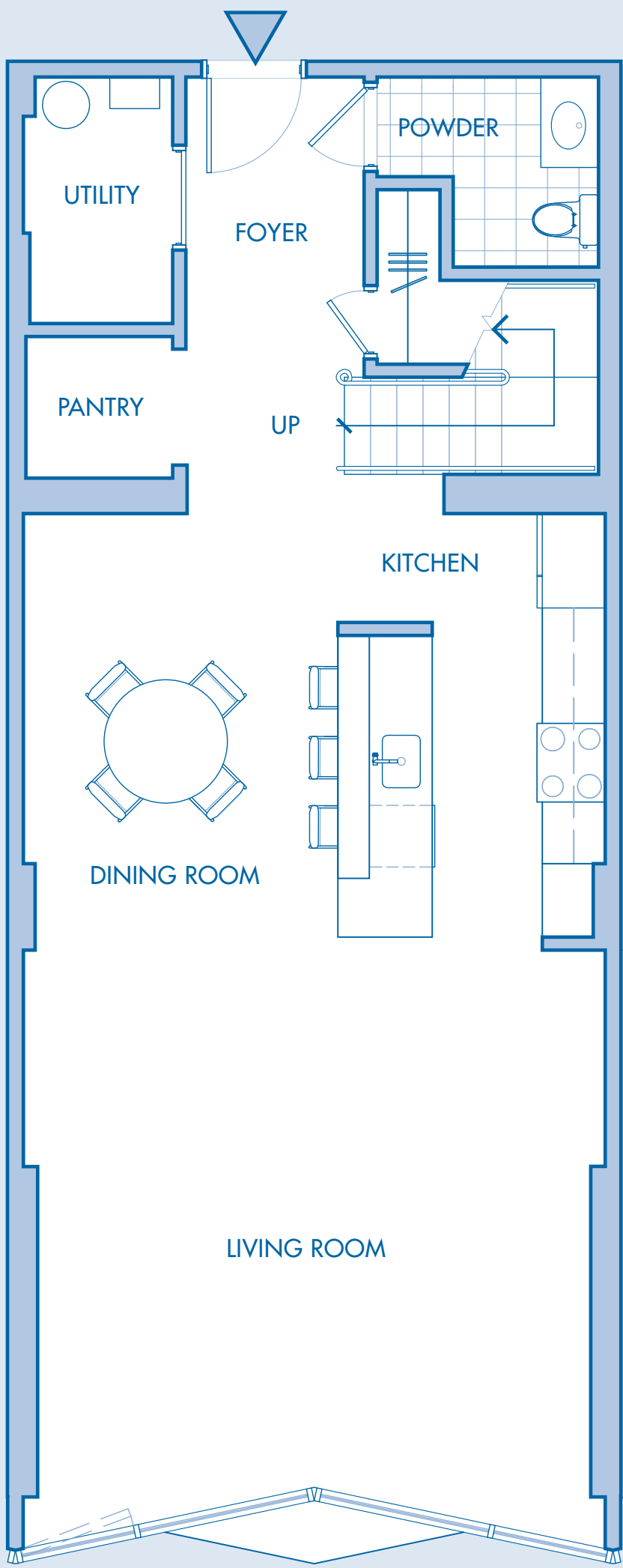
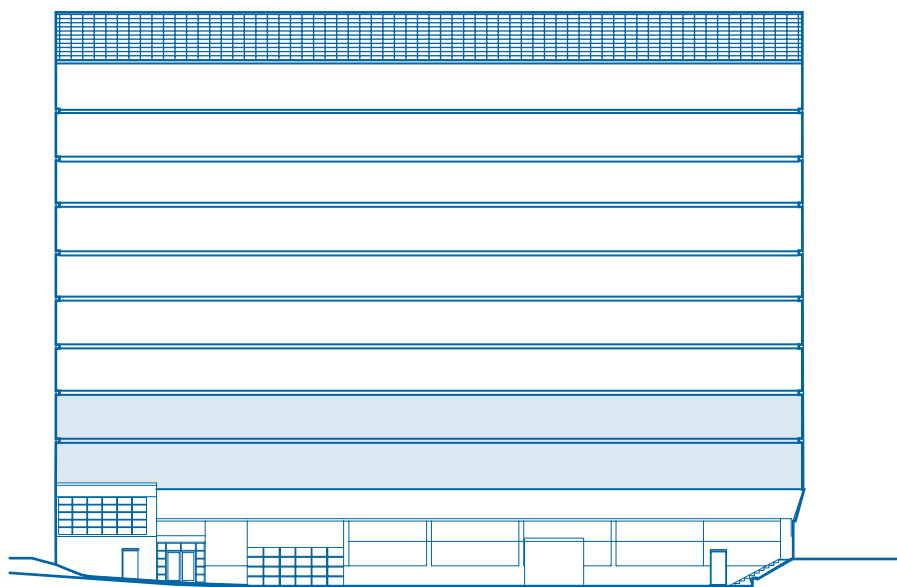
- Full virtual concierge / security system
- Fitness room
- Music studio
- Secure mailroom
- Indoor bicycle rack
- Full lobby with lounge area
- Deeded parking
- Manhattan Views



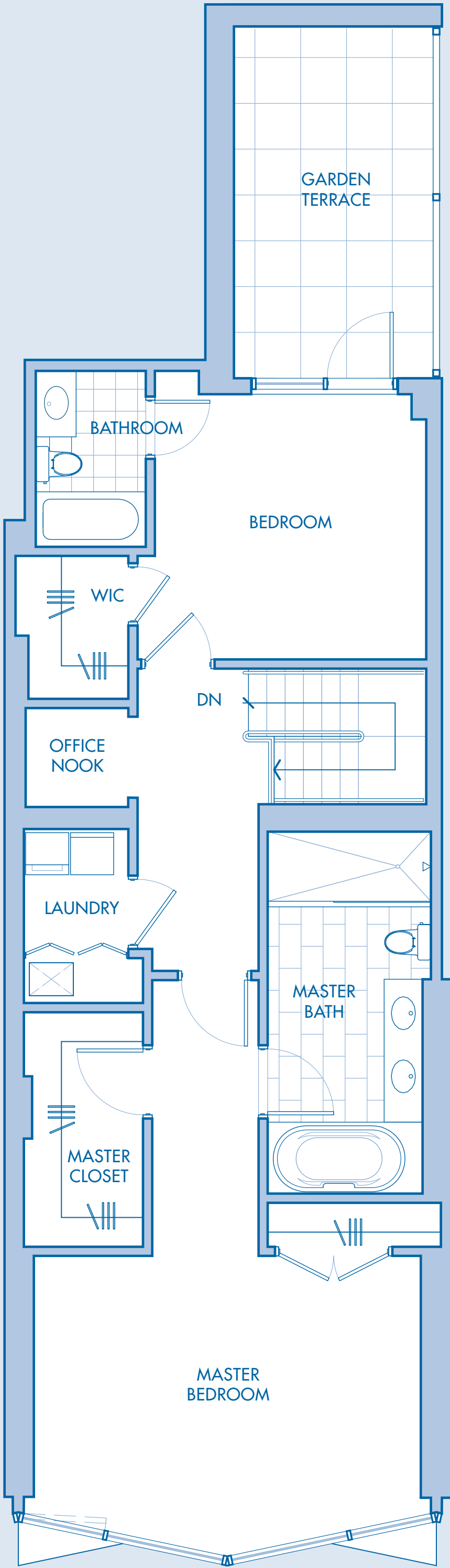
Upper level



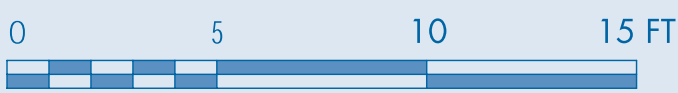
Lower level



LOWER LEVEL



UPPER LEVEL



This floor plan is an artist rendering and reflects approximate layout and measurements which are subject to normal construction variances and tolerances and may be subject to further change by the Sponsor, Aventine Edgewater, LLC. All Units offered in Aventine Above the Hudson, a Condominium (the "Condominium"), will, however, substantially conform to the sales models, descriptions or floor plans relied upon by a prospective purchase when entering into a purchase agreement with the Sponsor. The Condominium is an equal housing opportunity in which there are no barriers to obtaining housing because of race, creed, color, national origin, ancestry, age, sex, gender identity or expression, affectional or sexual orientation, marital status, familial status, liability for service in the Armed Forces of the United States, disability, or nationality. These photographs depict geographic locations, shopping and facilities which are not located within the Condominium and are approximately 5 miles from the Condominium. Renderings are artist's conceptions which depict the proposed common elements, units and facilities which are planned for the Condominium.



AVENTINE

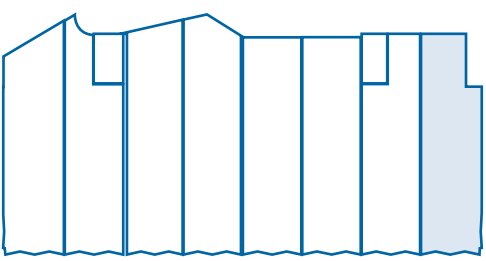
UNIT 2H
2,111 S.F.
garden terrace 218 s.f.

Residence Features

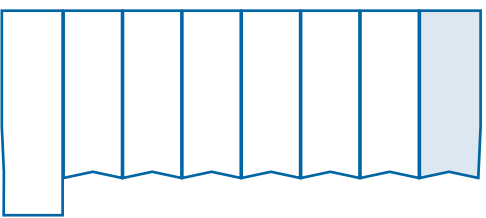
- Foyer entrance
- Master bedroom
- Master bathroom
- Powder room
- Living / Dining room
- Cable, phone, internet, & surround sound ready
- LG Energy Star kitchen appliances
- Caesar Stone kitchen counter tops
- Pantry
- Moen plumbing fixtures
- Dual vanity sinks
- Study / Office area
- Washer / Dryer
- Oversized tub with hand-washer
- Expansive windows
- Spacious closets & storage

Building Amenities

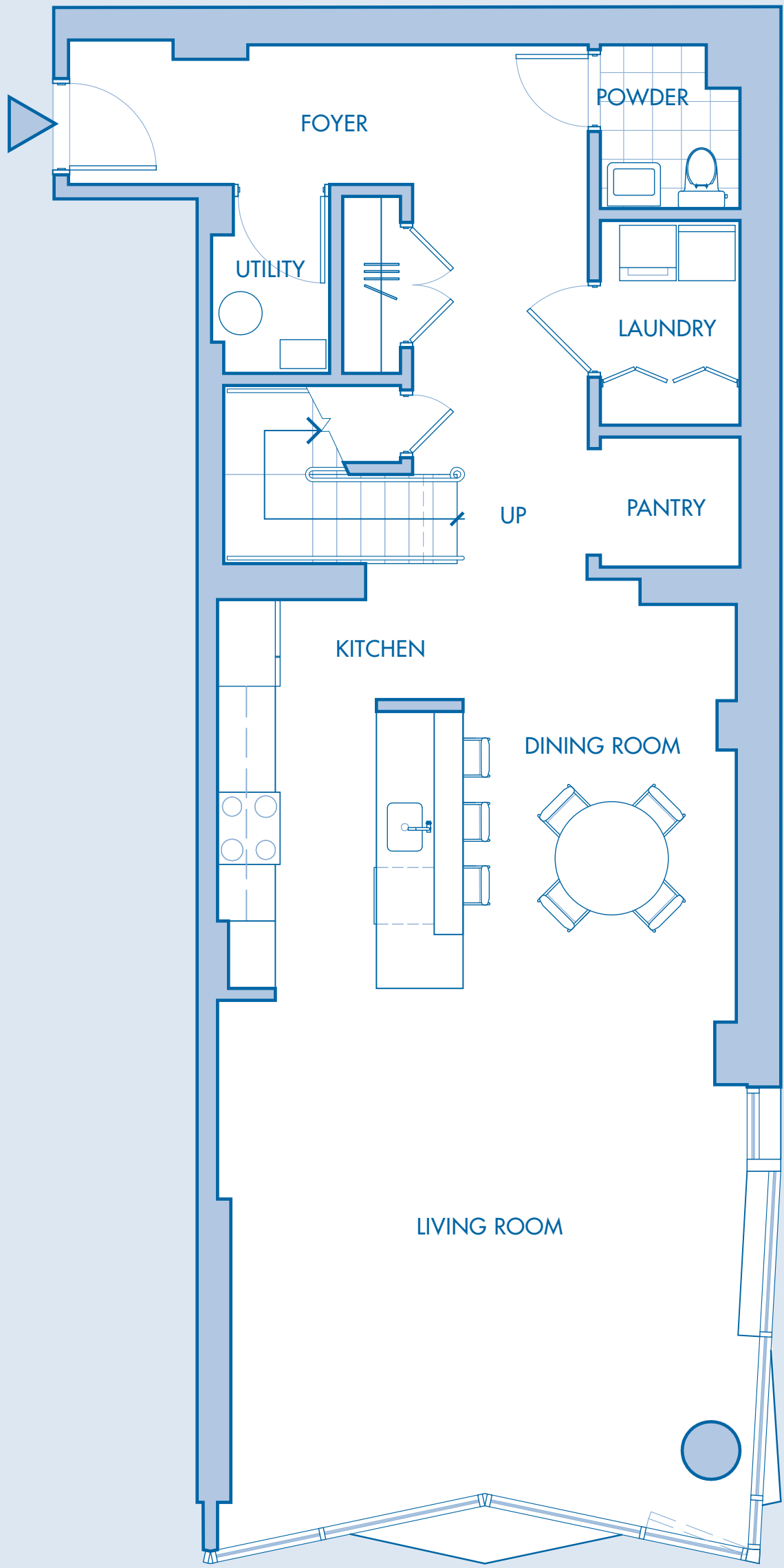
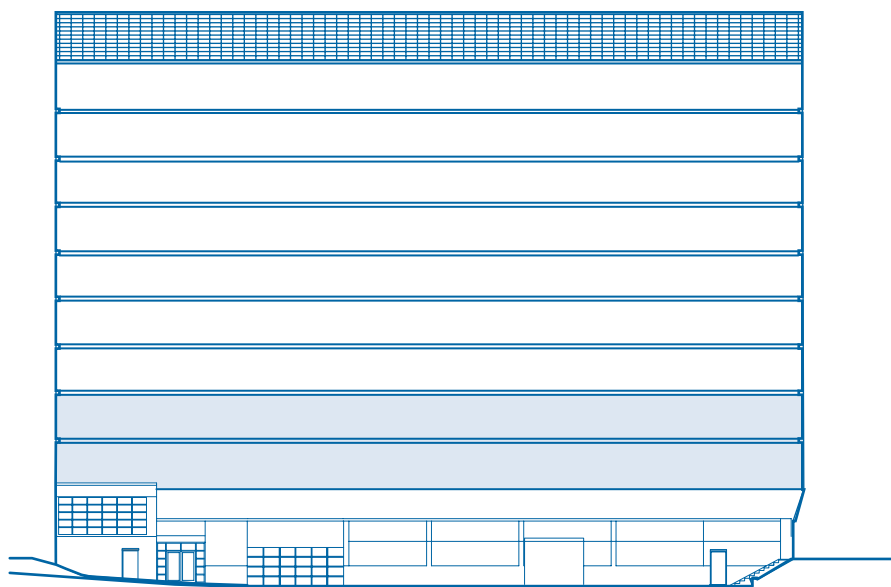
- Full virtual concierge / security system
- Fitness room
- Music studio
- Secure mailroom
- Indoor bicycle rack
- Full lobby with lounge area
- Deeded parking
- Manhattan Views



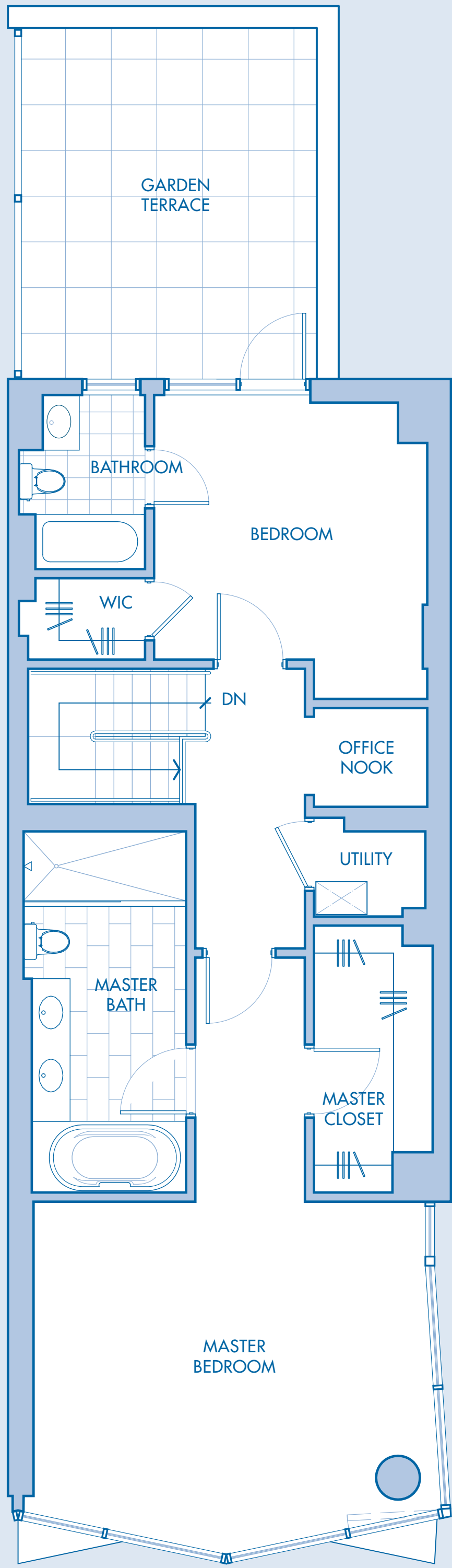
Upper level



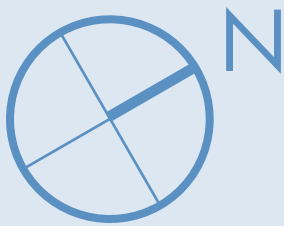
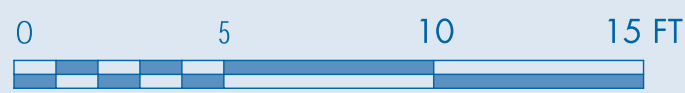
Lower level



LOWER LEVEL



UPPER LEVEL



This floor plan is an artist rendering and reflects approximate layout and measurements which are subject to normal construction variances and tolerances and may be subject to further change by the Sponsor, Aventine Edgewater, LLC. All Units offered in Aventine Above the Hudson, a Condominium (the "Condominium"), will, however, substantially conform to the sales models, descriptions or floor plans relied upon by a prospective purchase when entering into a purchase agreement with the Sponsor. The Condominium is an equal housing opportunity in which there are no barriers to obtaining housing because of race, creed, color, national origin, ancestry, age, sex, gender identity or expression, affectional or sexual orientation, marital status, familial status, liability for service in the Armed Forces of the United States, disability, or nationality. These photographs depict geographic locations, shopping and facilities which are not located within the Condominium and are approximately 5 miles from the Condominium. Renderings are artist's conceptions which depict the proposed common elements, units and facilities which are planned for the Condominium.

AVENTINE

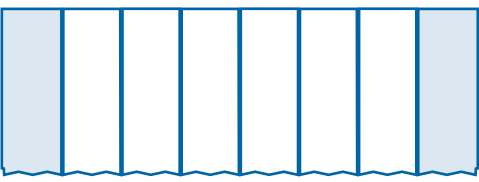
UNITS 4A, 6A, 4H, 8H
2,117 S.F.

Residence Features

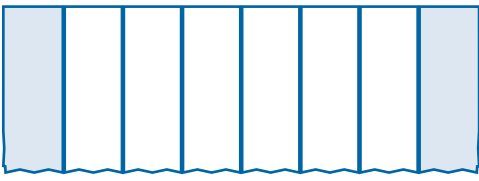
- Foyer entrance
- Master bedroom
- Master bathroom
- Powder room
- Living / Dining room
- Cable, phone, internet, & surround sound ready
- IG Energy Star kitchen appliances
- Caesar Stone kitchen counter tops
- Pantry
- Moen plumbing fixtures
- Dual vanity sinks
- Study / Office area
- Washer / Dryer
- Oversized tub with hand-washer
- Expansive windows
- Spacious closets & storage

Building Amenities

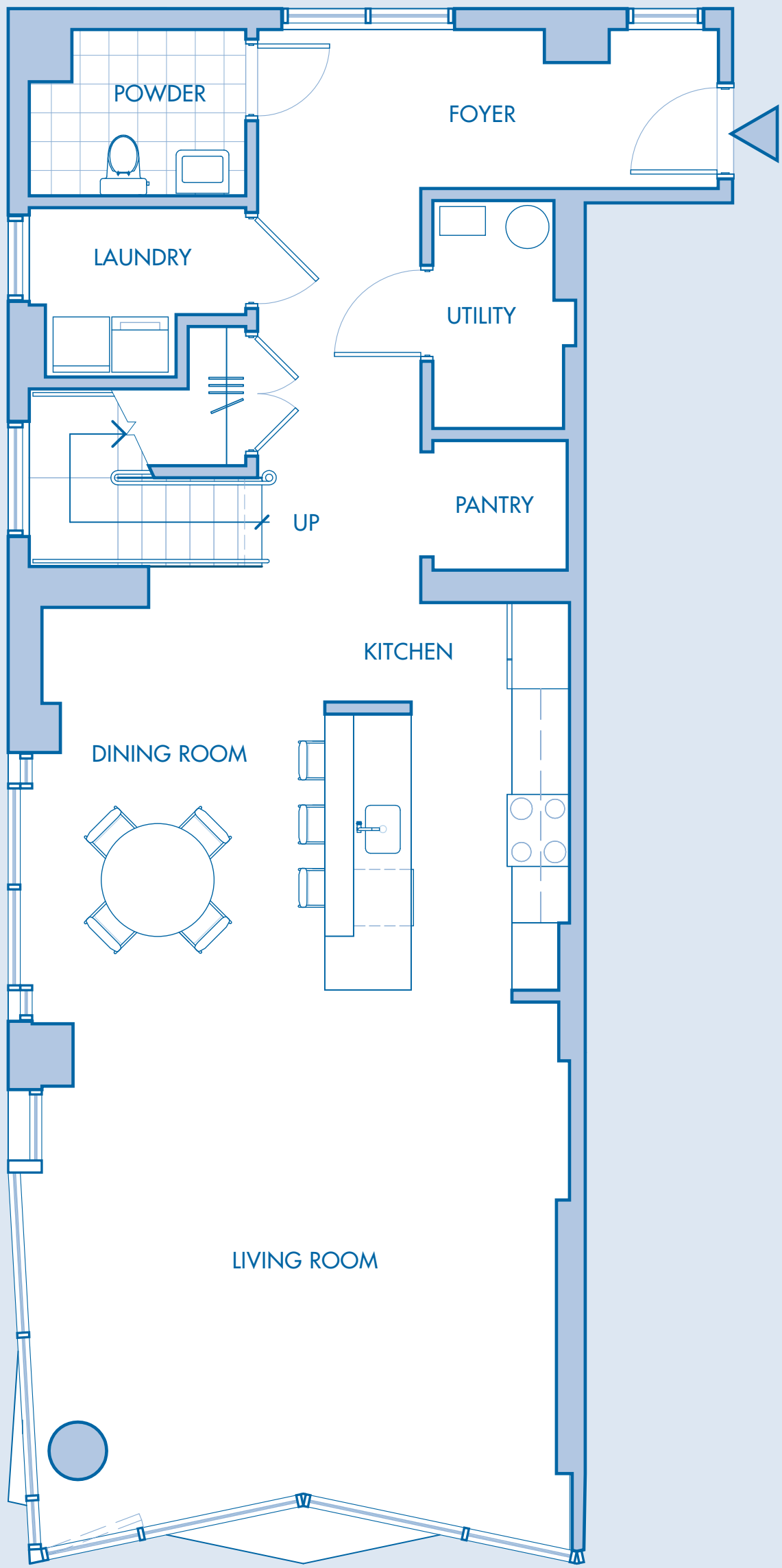
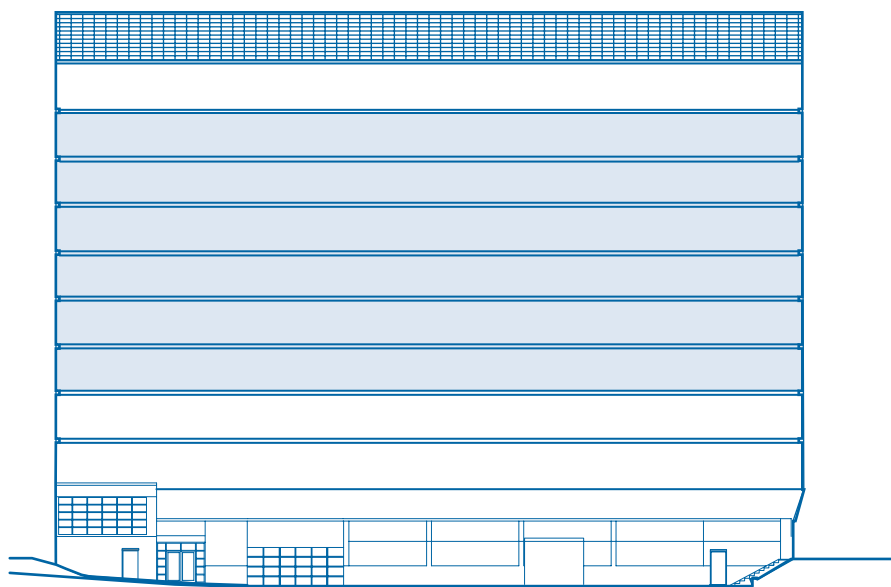
- Full virtual concierge / security system
- Fitness room
- Music studio
- Secure mailroom
- Indoor bicycle rack
- Full lobby with lounge area
- Deeded parking
- Manhattan Views



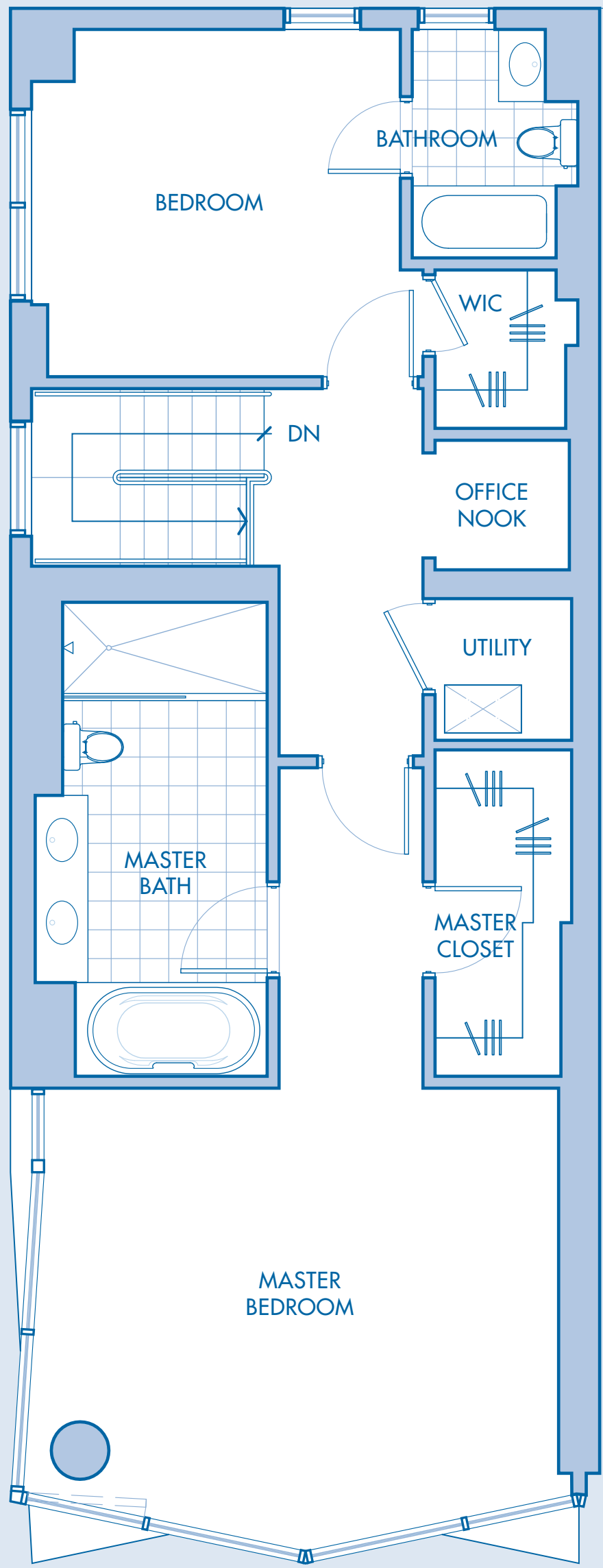
Upper level



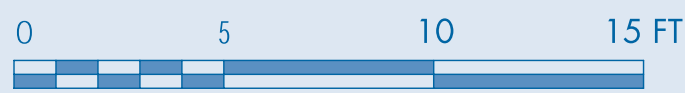
Lower level



LOWER LEVEL



UPPER LEVEL



This floor plan is an artist rendering and reflects approximate layout and measurements which are subject to normal construction variances and tolerances and may be subject to further change by the Sponsor, Aventure Edgewater, LLC. All Units offered in Aventure Above the Hudson, a Condominium (the "Condominium"), will, however, substantially conform to the sales models, descriptions or floor plans relied upon by a prospective purchase when entering into a purchase agreement with the Sponsor. The Condominium is an equal housing opportunity in which there are no barriers to obtaining housing because of race, creed, color, national origin, ancestry, age, sex, gender identity or expression, affectional or sexual orientation, marital status, familial status, liability for service in the Armed Forces of the United States, disability, or nationality. These photographs depict geographic locations, shopping and facilities which are not located within the Condominium and are approximately 5 miles from the Condominium. Renderings are artist's conceptions which depict the proposed common elements, units and facilities which are planned for the Condominium.



AVENTINE

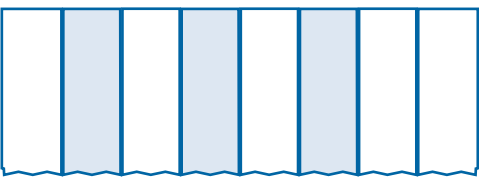
UNITS 4-8B, 4-8D, 4-8F
1,891 S.F.

Residence Features

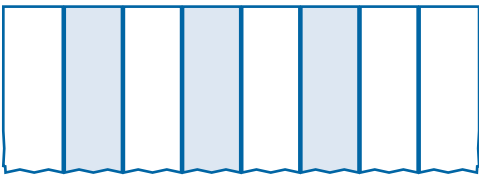
- Foyer entrance
- Master bedroom
- Master bathroom
- Powder room
- Living / Dining room
- Cable, phone, internet, & surround sound ready
- LG Energy Star kitchen appliances
- Caesar Stone kitchen counter tops
- Pantry
- Moen plumbing fixtures
- Dual vanity sinks
- Study / Office area
- Washer / Dryer
- Oversized tub with hand-washer
- Expansive windows
- Spacious closets & storage

Building Amenities

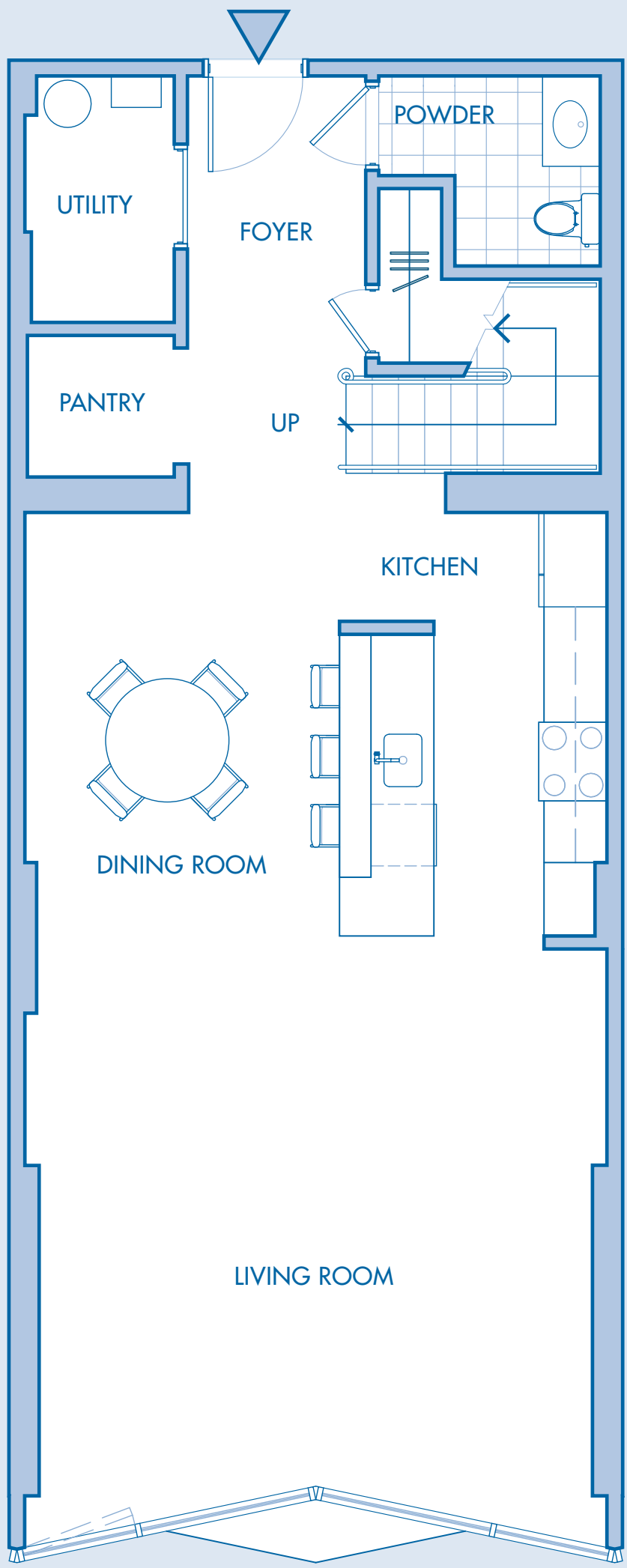
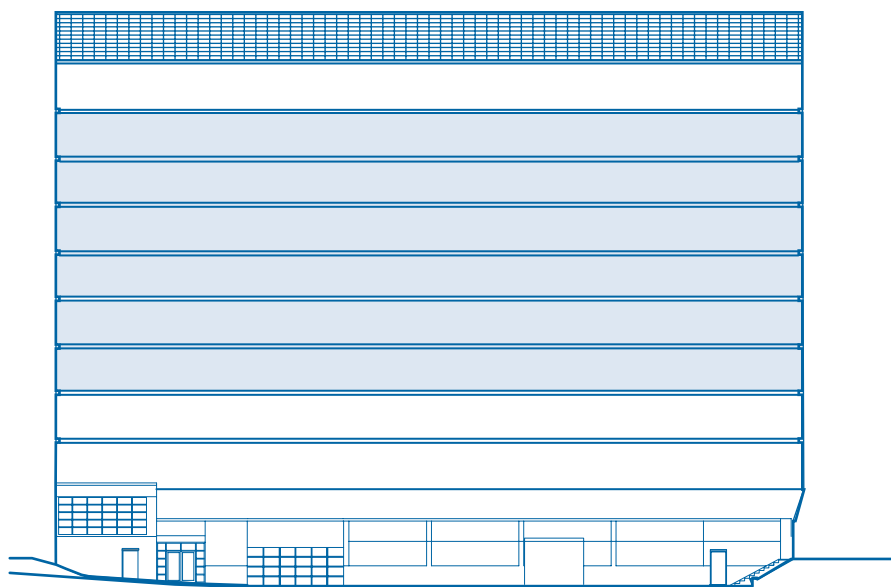
- Full virtual concierge / security system
- Fitness room
- Music studio
- Secure mailroom
- Indoor bicycle rack
- Full lobby with lounge area
- Deeded parking
- Manhattan Views



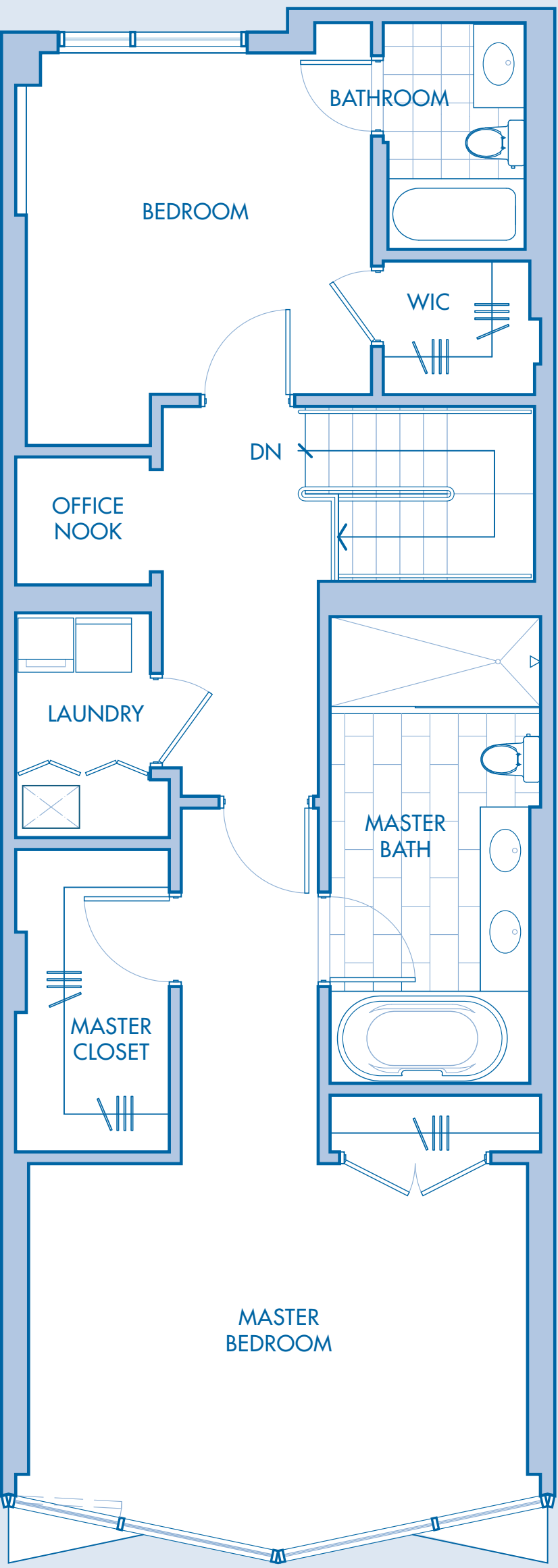
Upper level



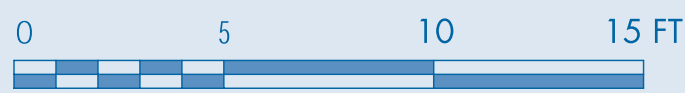
Lower level



LOWER LEVEL



UPPER LEVEL



This floor plan is an artist rendering and reflects approximate layout and measurements which are subject to normal construction variances and tolerances and may be subject to further change by the Sponsor, Aventure Edgewater, LLC. All Units offered in Aventure Above the Hudson, a Condominium (the "Condominium"), will, however, substantially conform to the sales models, descriptions or floor plans relied upon by a prospective purchase when entering into a purchase agreement with the Sponsor. The Condominium is an equal housing opportunity in which there are no barriers to obtaining housing because of race, creed, color, national origin, ancestry, age, sex, gender identity or expression, affectional or sexual orientation, marital status, familial status, liability for service in the Armed Forces of the United States, disability, or nationality. These photographs depict geographic locations, shopping and facilities which are not located within the Condominium and are approximately 5 miles from the Condominium. Renderings are artist's conceptions which depict the proposed common elements, units and facilities which are planned for the Condominium.



AVENTINE

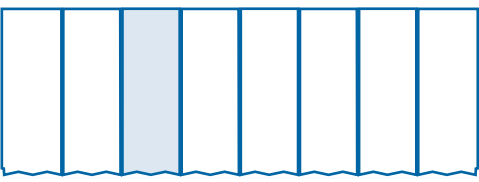
UNITS 4-8C 1,943 S.F.

Residence Features

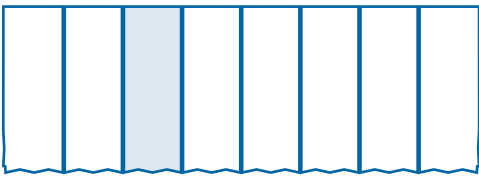
- Foyer entrance
- Master bedroom
- Master bathroom
- Powder room
- Living / Dining room
- Cable, phone, internet, & surround sound ready
- LG Energy Star kitchen appliances
- Caesar Stone kitchen counter tops
- Pantry
- Moen plumbing fixtures
- Dual vanity sinks
- Study / Office area
- Washer / Dryer
- Oversized tub with hand-washer
- Expansive windows
- Spacious closets & storage

Building Amenities

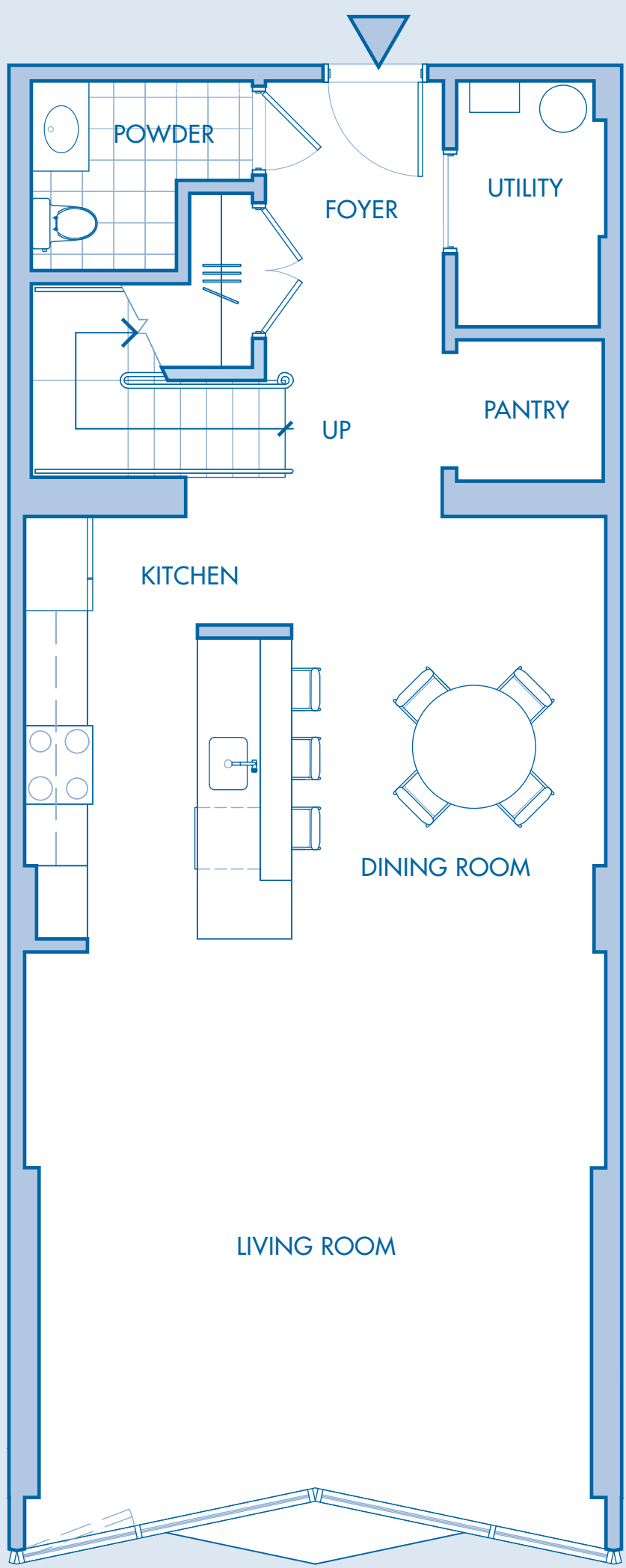
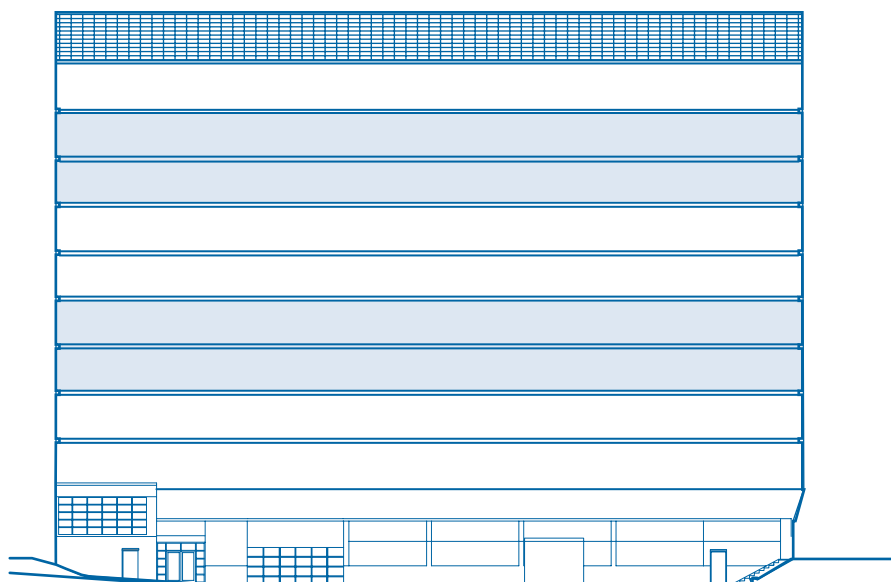
- Full virtual concierge / security system
- Fitness room
- Music studio
- Secure mailroom
- Indoor bicycle rack
- Full lobby with lounge area
- Deeded parking
- Manhattan Views



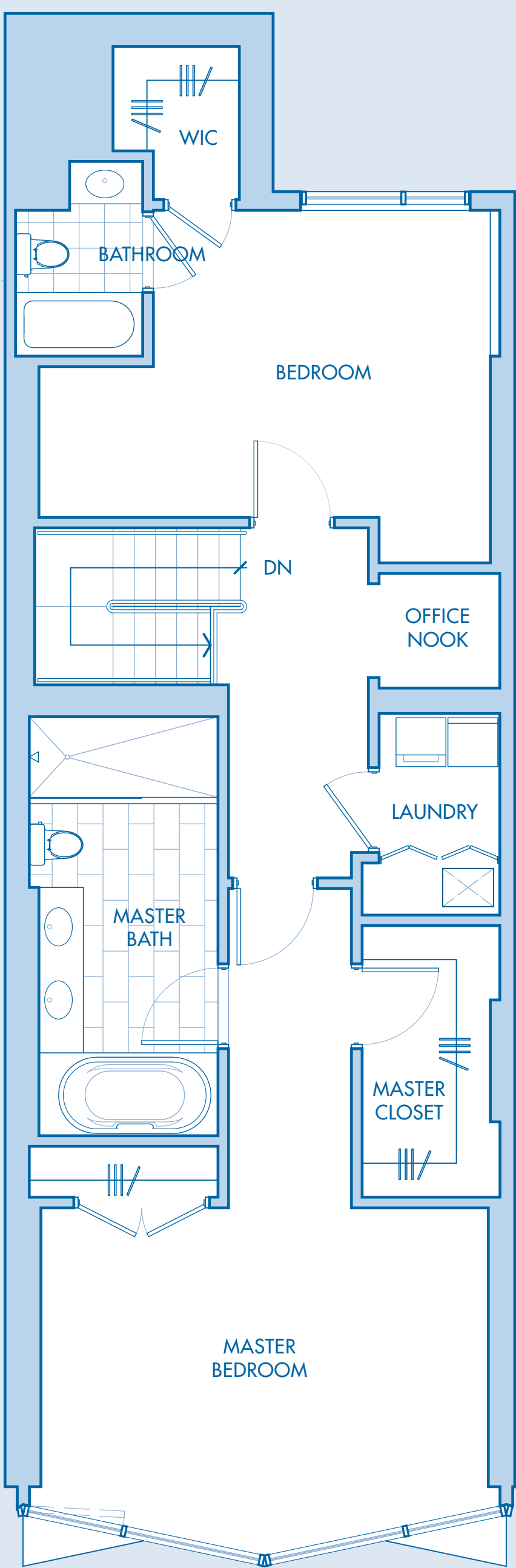
Upper level



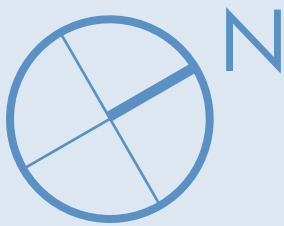
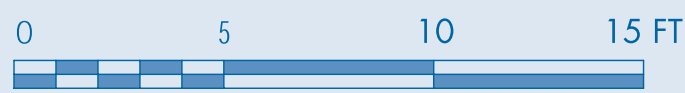
Lower level



LOWER LEVEL



UPPER LEVEL



This floor plan is an artist rendering and reflects approximate layout and measurements which are subject to normal construction variances and tolerances and may be subject to further change by the Sponsor, Aventine Edgewater, LLC. All Units offered in Aventine Above the Hudson, a Condominium (the "Condominium"), will, however, substantially conform to the sales models, descriptions or floor plans relied upon by a prospective purchase when entering into a purchase agreement with the Sponsor. The Condominium is an equal housing opportunity in which there are no barriers to obtaining housing because of race, creed, color, national origin, ancestry, age, sex, gender identity or expression, affectional or sexual orientation, marital status, familial status, liability for service in the Armed Forces of the United States, disability, or nationality. These photographs depict geographic locations, shopping and facilities which are not located within the Condominium and are approximately 5 miles from the Condominium. Renderings are artist's conceptions which depict the proposed common elements, units and facilities which are planned for the Condominium.

AVENTINE

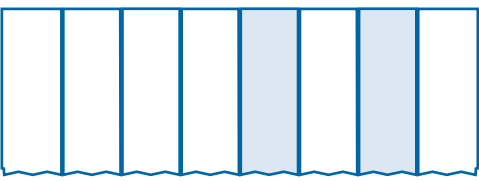
UNITS 4-8E, 4-8G
1,891 S.F.

Residence Features

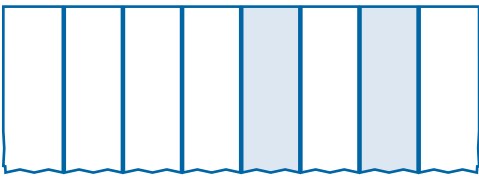
- Foyer entrance
- Master bedroom
- Master bathroom
- Powder room
- Living / Dining room
- Cable, phone, internet, & surround sound ready
- LG Energy Star kitchen appliances
- Caesar Stone kitchen counter tops
- Pantry
- Moen plumbing fixtures
- Dual vanity sinks
- Study / Office area
- Washer / Dryer
- Oversized tub with hand-washer
- Expansive windows
- Spacious closets & storage

Building Amenities

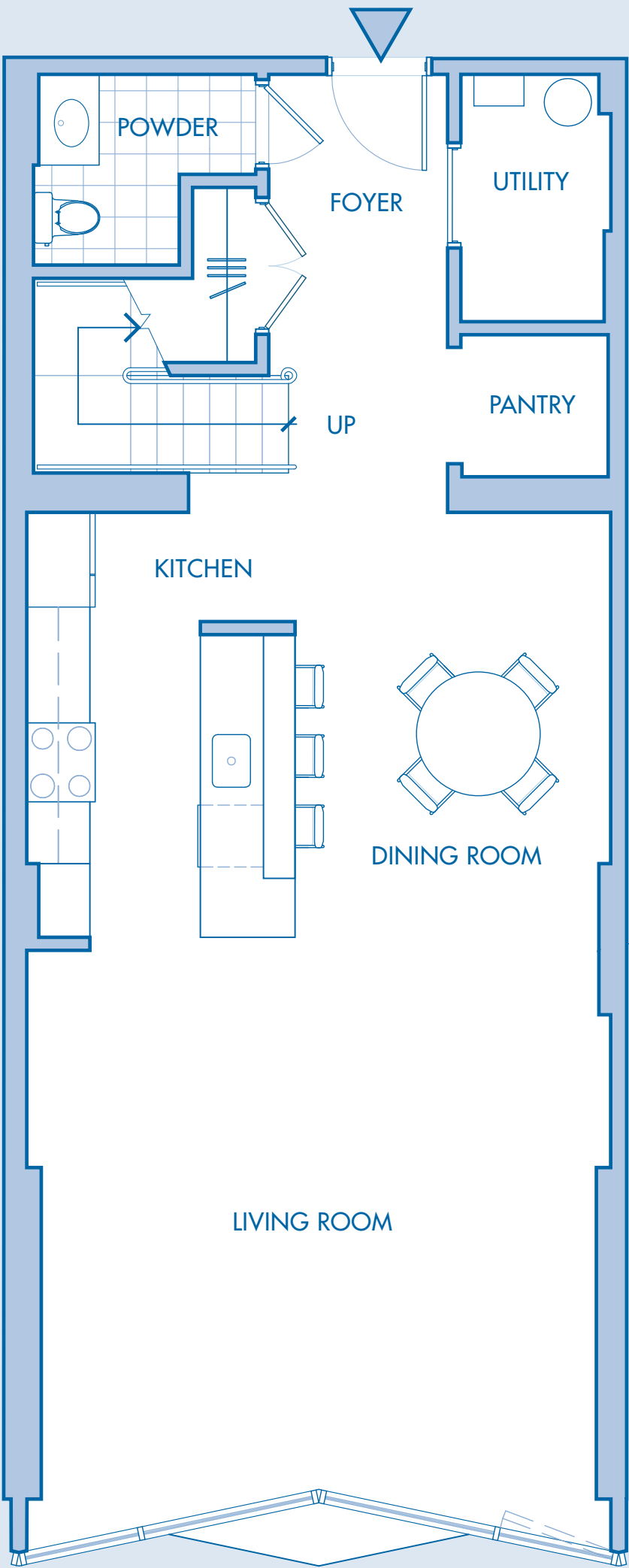
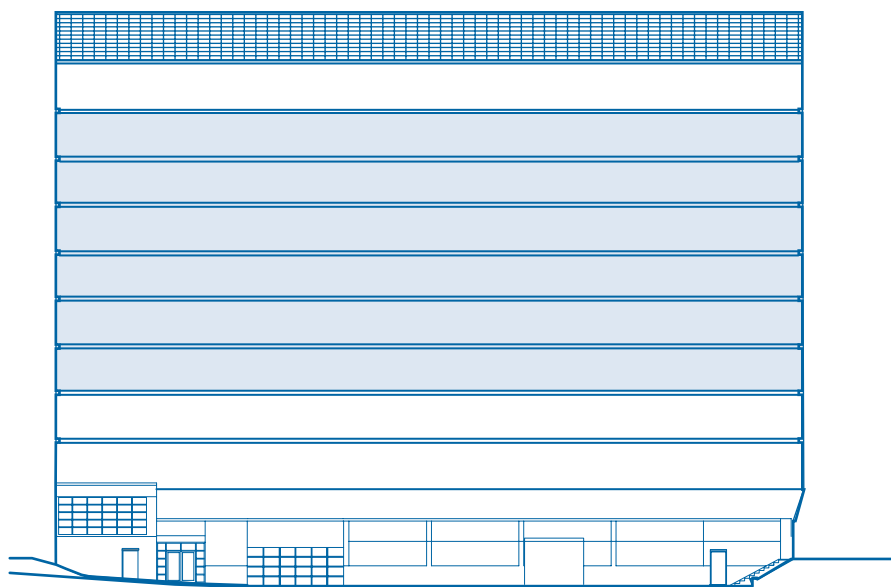
- Full virtual concierge / security system
- Fitness room
- Music studio
- Secure mailroom
- Indoor bicycle rack
- Full lobby with lounge area
- Deeded parking
- Manhattan Views



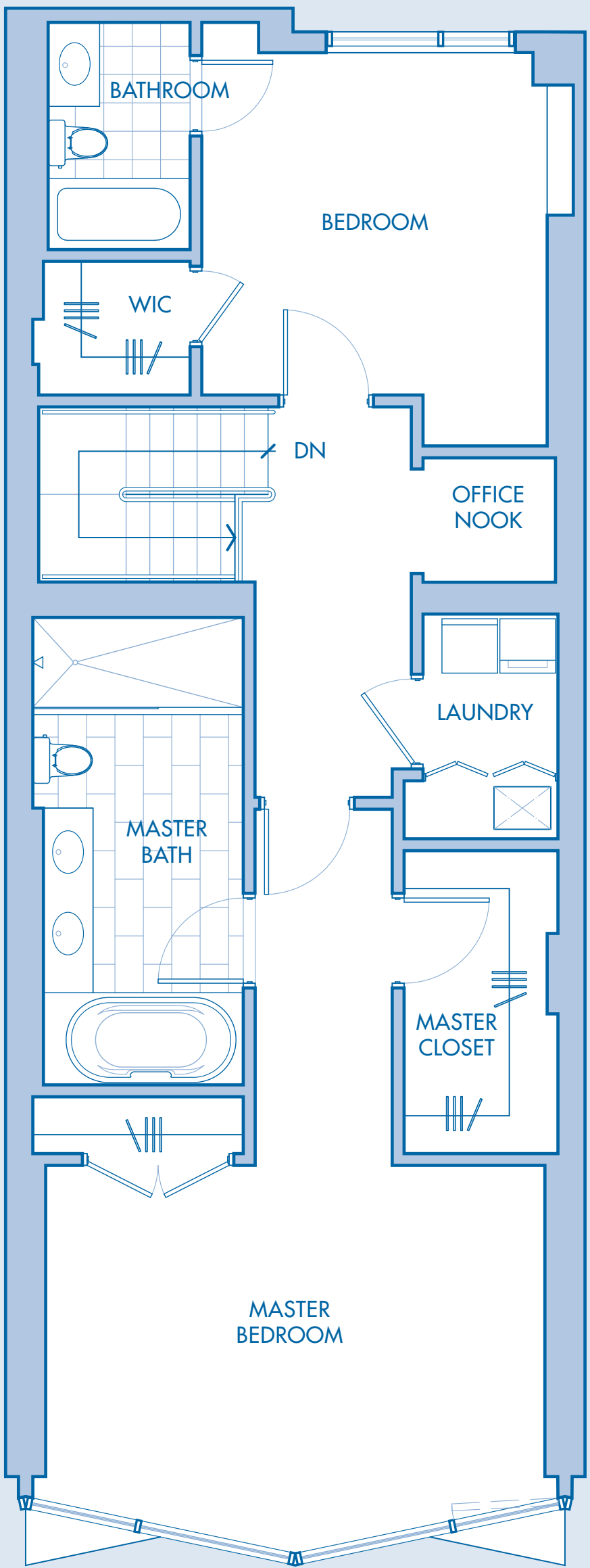
Upper level



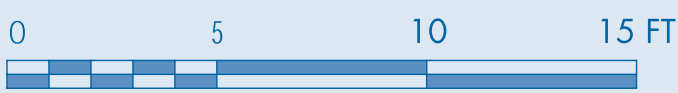
Lower level



LOWER LEVEL



UPPER LEVEL



This floor plan is an artist rendering and reflects approximate layout and measurements which are subject to normal construction variances and tolerances and may be subject to further change by the Sponsor, Aventine Edgewater, LLC. All Units offered in Aventine Above the Hudson, a Condominium (the "Condominium"), will, however, substantially conform to the sales models, descriptions or floor plans relied upon by a prospective purchase when entering into a purchase agreement with the Sponsor. The Condominium is an equal housing opportunity in which there are no barriers to obtaining housing because of race, creed, color, national origin, ancestry, age, sex, gender identity or expression, affectional or sexual orientation, marital status, familial status, liability for service in the Armed Forces of the United States, disability, or nationality. These photographs depict geographic locations, shopping and facilities which are not located within the Condominium and are approximately 5 miles from the Condominium. Renderings are artist's conceptions which depict the proposed common elements, units and facilities which are planned for the Condominium.



AVENTINE

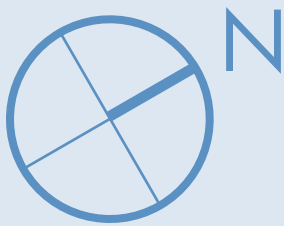
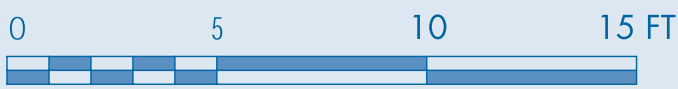
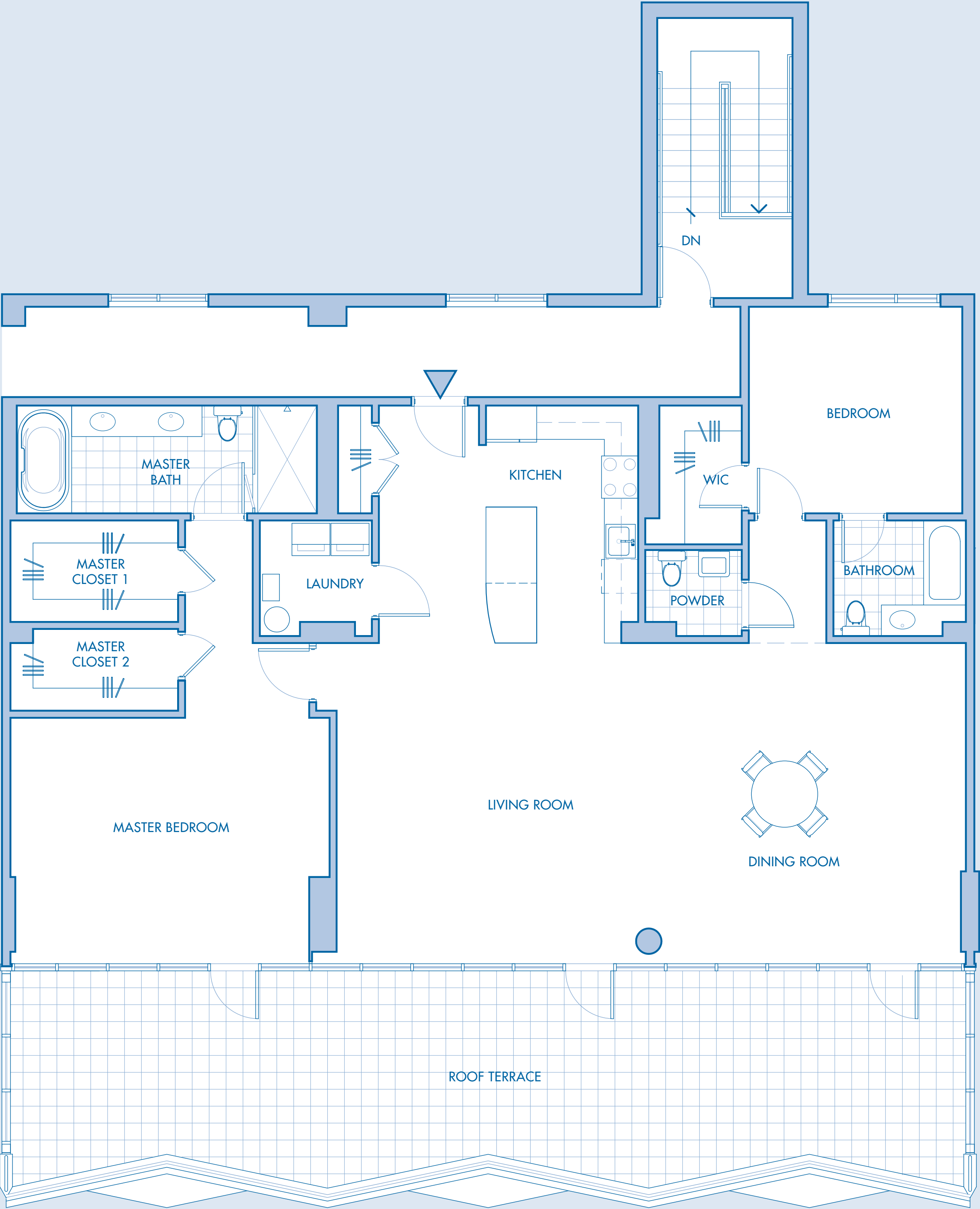
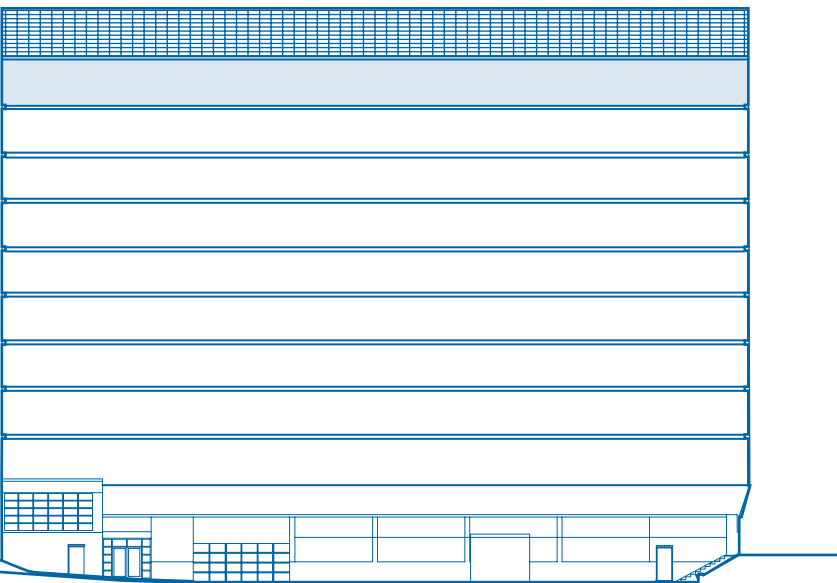
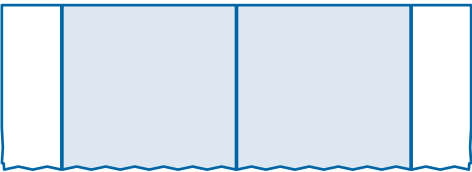
UNITS 10A, 10B
2,002 S.F.
roof terrace 741 s.f.

Residence Features

- Foyer entrance
- Master bedroom
- Master bathroom
- Powder room
- Living / Dining room
- Cable, phone, internet, & surround sound ready
- LG Energy Star kitchen appliances
- Caesar Stone kitchen counter tops
- Pantry
- Moen plumbing fixtures
- Dual vanity sinks
- Study / Office area
- Washer / Dryer
- Oversized tub with hand-washer
- Expansive windows
- Spacious closets & storage

Building Amenities

- Full virtual concierge / security system
- Fitness room
- Music studio
- Secure mailroom
- Indoor bicycle rack
- Full lobby with lounge area
- Deeded parking
- Manhattan Views



This floor plan is an artist rendering and reflects approximate layout and measurements which are subject to normal construction variances and tolerances and may be subject to further change by the Sponsor, Aventine Edgewater, LLC. All Units offered in Aventine Above the Hudson, a Condominium (the "Condominium"), will, however, substantially conform to the sales models, descriptions or floor plans relied upon by a prospective purchase when entering into a purchase agreement with the Sponsor. The Condominium is an equal housing opportunity in which there are no barriers to obtaining housing because of race, creed, color, national origin, ancestry, age, sex, gender identity or expression, affectional or sexual orientation, marital status, familial status, liability for service in the Armed Forces of the United States, disability, or nationality. These photographs depict geographic locations, shopping and facilities which are not located within the Condominium and are approximately 5 miles from the Condominium. Renderings are artist's conceptions which depict the proposed common elements, units and facilities which are planned for the Condominium.

AVENTINE

UNITS 8A, 8H

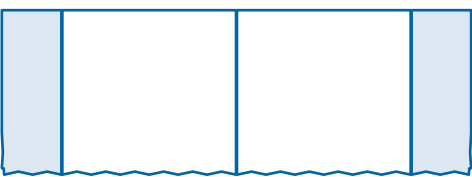
2,902 S.F.
roof terrace 252 s.f.

Residence Features

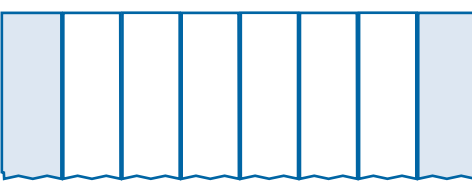
- Foyer entrance
- Master bedroom
- Master bathroom
- Powder room
- Living / Dining room
- Cable, phone, internet, & surround sound ready
- LG Energy Star kitchen appliances
- Caesar Stone kitchen counter tops
- Pantry
- Moen plumbing fixtures
- Dual vanity sinks
- Study / Office area
- Washer / Dryer
- Oversized tub with hand-washer
- Expansive windows
- Spacious closets & storage

Building Amenities

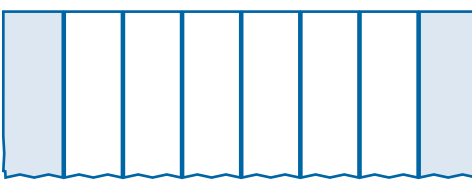
- Full virtual concierge / security system
- Fitness room
- Music studio
- Secure mailroom
- Indoor bicycle rack
- Full lobby with lounge area
- Deeded parking
- Manhattan Views



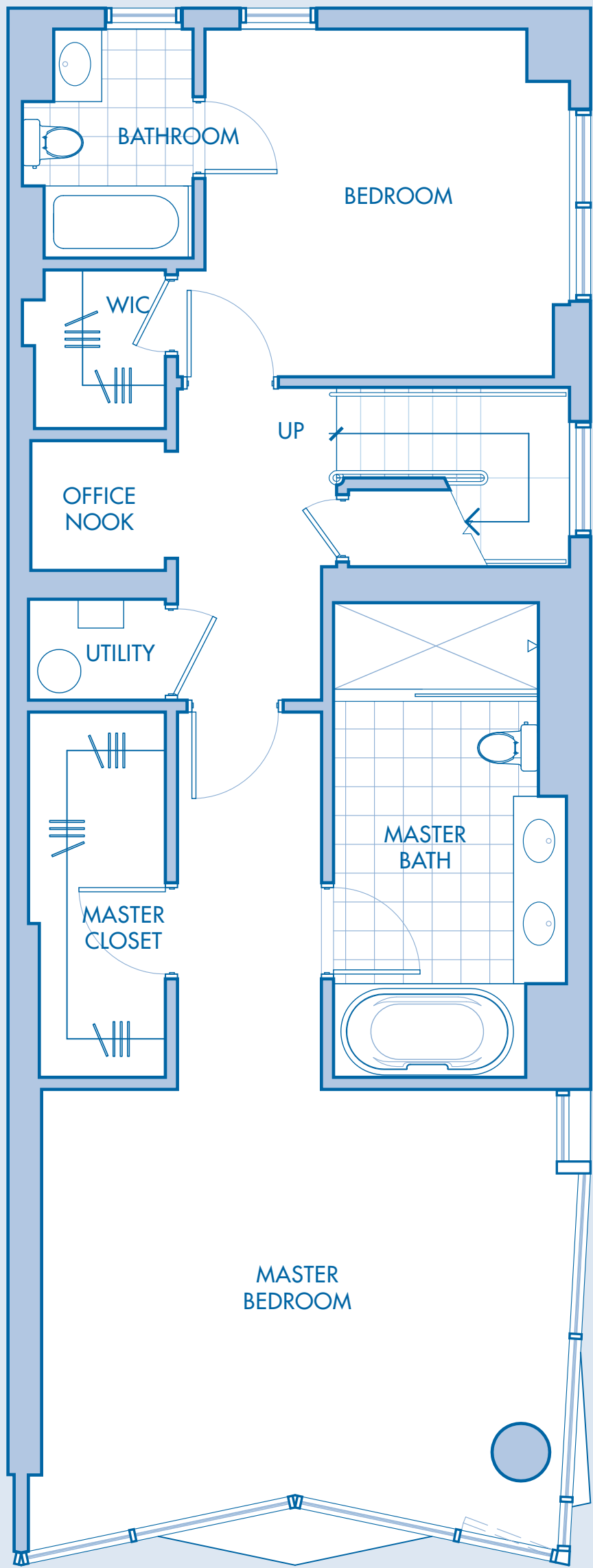
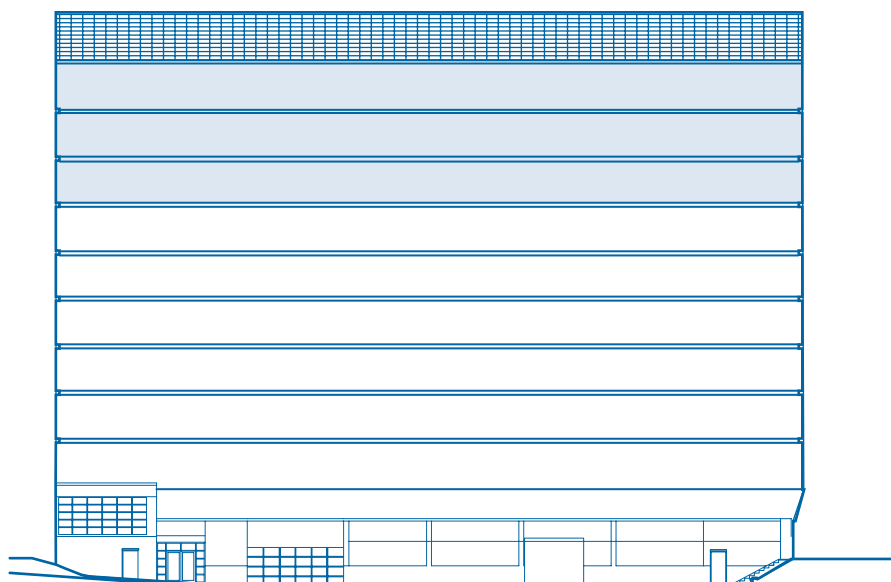
Upper level 2



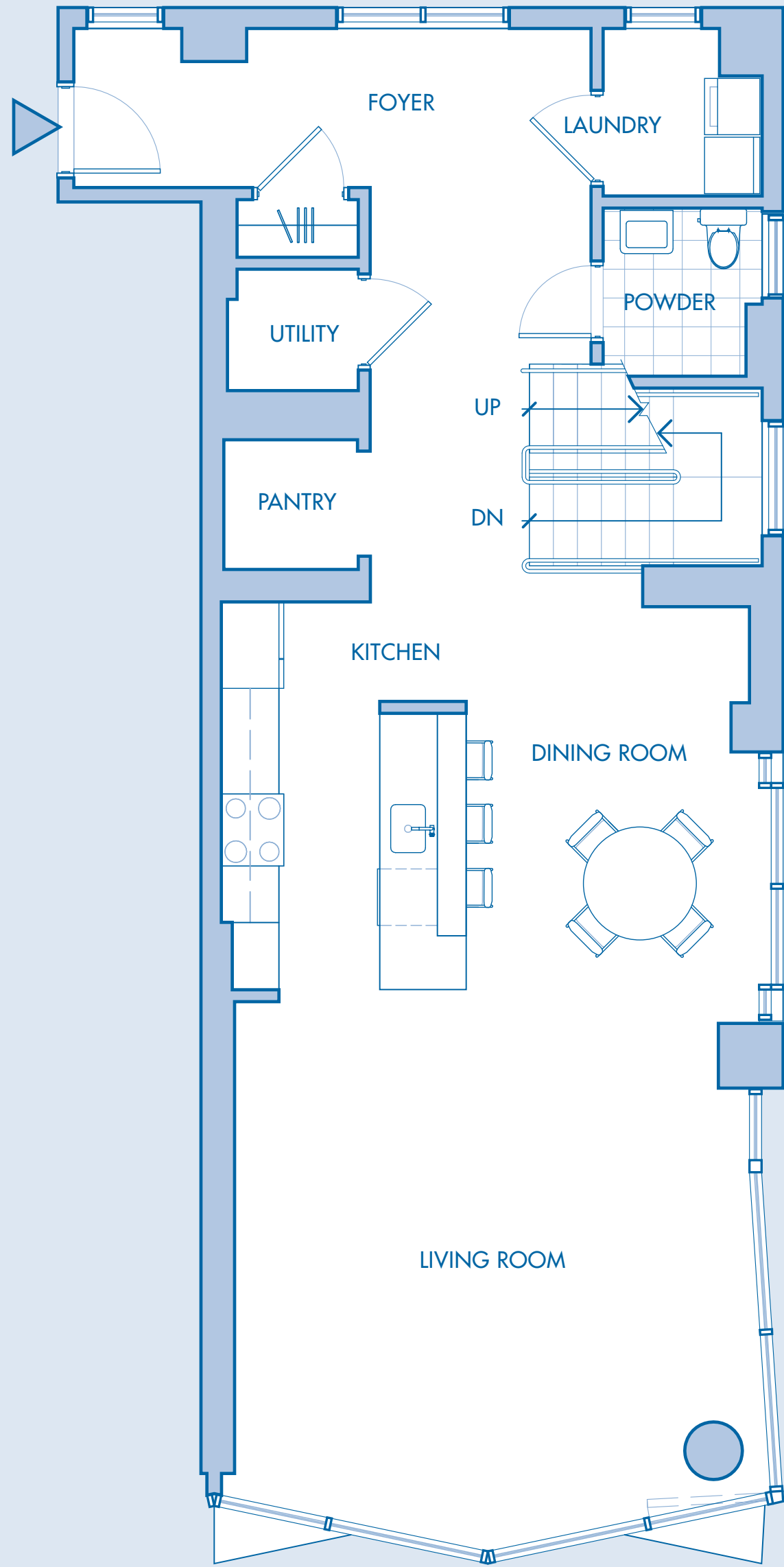
Upper level



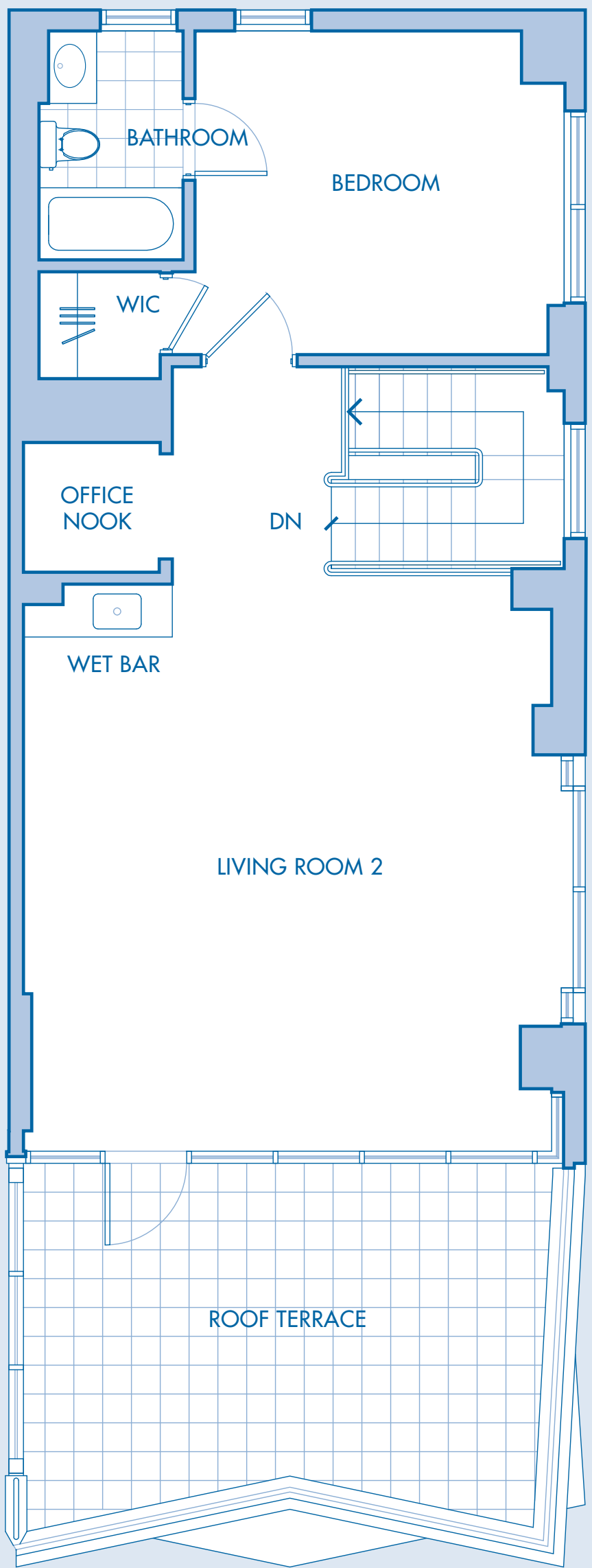
Lower level



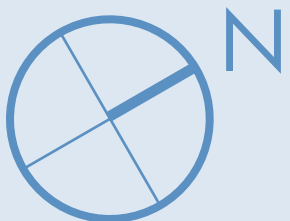
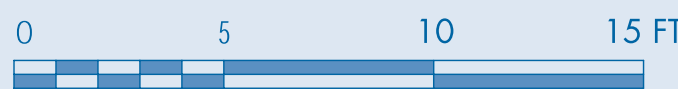
LOWER LEVEL



UPPER LEVEL 1



UPPER LEVEL 2



This floor plan is an artist rendering and reflects approximate layout and measurements which are subject to normal construction variances and tolerances and may be subject to further change by the Sponsor, Aventine Edgewater, LLC. All Units offered in Aventine Above the Hudson, a Condominium (the "Condominium"), will, however, substantially conform to the sales models, descriptions or floor plans relied upon by a prospective purchase when entering into a purchase agreement with the Sponsor. The Condominium is an equal housing opportunity in which there are no barriers to obtaining housing because of race, creed, color, national origin, ancestry, age, sex, gender identity or expression, affectional or sexual orientation, marital status, familial status, liability for service in the Armed Forces of the United States, disability, or nationality. These photographs depict geographic locations, shopping and facilities which are not located within the Condominium and are approximately 5 miles from the Condominium. Renderings are artist's conceptions which depict the proposed common elements, units and facilities which are planned for the Condominium.